

**CMT – OCTOBER 2023**

**Assistant Chief Executive (LGA)**  
Elaine Jackson

**Executive Officer**  
Joanne Negus

**Chief People Officer**  
Dean Shoemith

**Director of Digital and Resident Access**  
Paul Golland

**Director of Public Health**  
Rachel Flowers

**Director of Policy, Programmes & Performance**  
David Courcoux

**Director of Transformation**  
Sharon Godman

**Head of Learning and Organisational Development**  
Grace Addy

**Head of Digital Operations**  
Sarah Cullen

**Public Health Consultant**  
Jack Bedeman

**Head of Programmes and Performance**  
Caroline Bruce

**Programme Manager**  
Barbara Grant

**Head of Human Resources – Resources and ACE**  
Gillian Bevan

**Head of Digital Services, Access and Reach**  
Opama Khan

**Public Health Consultant**  
James Moore

**Head of Strategy and Policy**  
Helen Reeves

**Financial Analyst**  
Jonathan Ross

**Head of Human Resources-SCRER and Housing**  
Jennifer Sankar

**Head of Resident Contact**  
Lisa Wheatley

**Public Health Locum Consultant**  
Andrea Fallon

**Head of Elections**  
Seth Alker

**Head of Human Resources – Children’s and Adults**  
Debbie Calliste

**Head of Bereavement and Registrars**  
Kevin Pilkington

**Public Health Consultant**  
Vacant

**Head of Communications**  
Susie Rundle

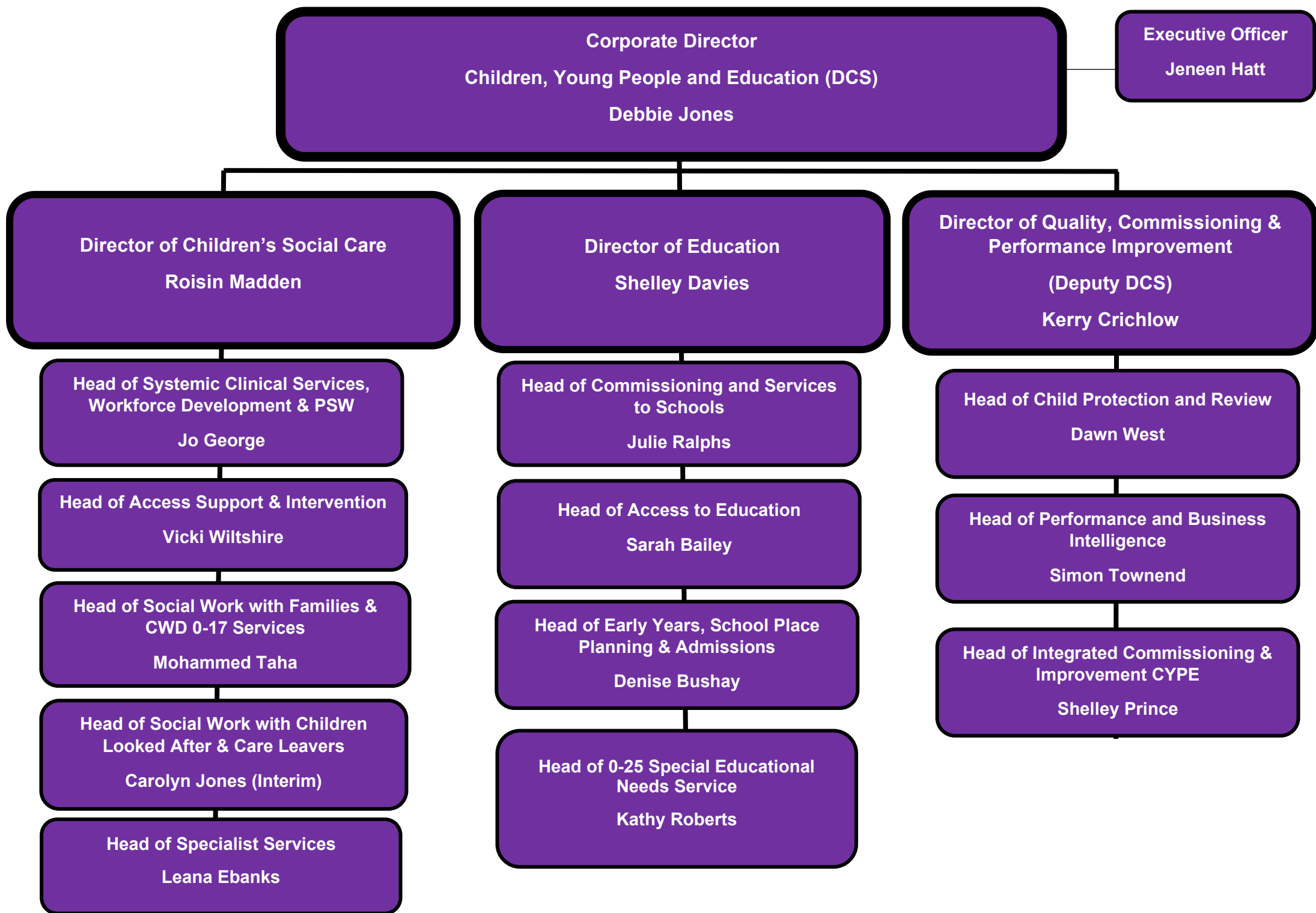
**Head of Recruitment**  
Katie Wallace

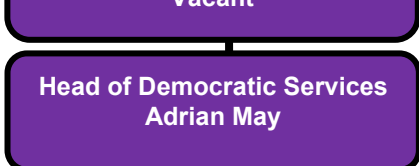
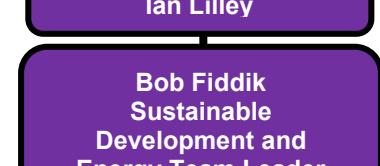
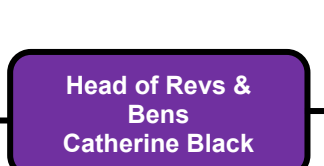
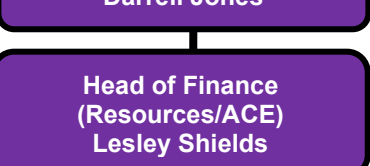
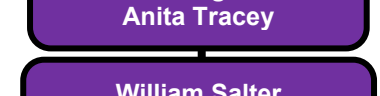
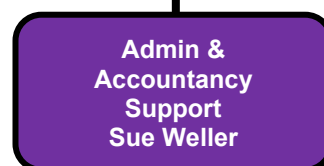
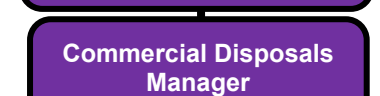
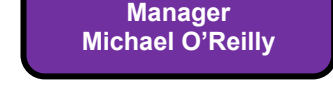
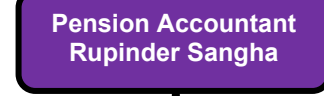
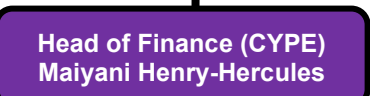
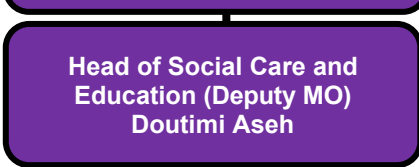
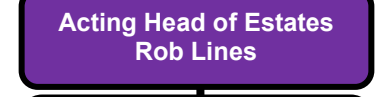
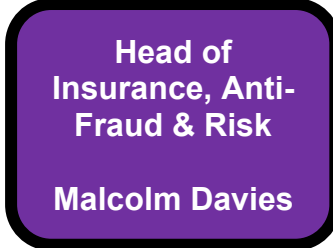
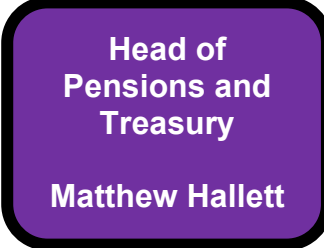
**Head of Specialist Systems**  
Jon Martin

**Public Health Consultant**  
Vacant

**Head of Payroll**  
Caroline Sheehy

**Head of Human Resources – Systems and Data**  
Tina Rekhi





**Corporate Director**  
**Sustainable Communities, Regeneration & Economic Recovery**  
**Nick Hibberd**

**Executive Officer**  
**Anne Lackenby**

**Director**  
**Planning & Sustainable Regeneration**  
**Heather Cheesbrough**

**Director**  
**Culture & Community Safety**  
**Kristian Aspinall**

**Interim Director**  
**Sustainable Communities**  
**Karen Agbabiaka (interim)**

**Head of Development Management**  
**Nicola Townsend**

**Head of Strategic Transport**  
**Ian Plowright**

**Head of Building Control**  
**Ric Patterson**

**Head of Spatial Planning, Growth  
Zone & Regeneration**  
**Steve Dennington**

**Head of Employment, Skills &  
Economic Development**  
**Carol Squires**

**Head of Culture, Leisure & Libraries**  
**Stephanie Wilson**

**Head of Violence Reduction Network**  
**Christopher Rowney**

**Head of Croydon Music & Arts**  
**Graeme Smith**

**Strategic Lead for Resilience &  
Emergency Planning**  
**Natalia Proctor**

**Head of Coroners Service**  
**Stephen Rowan**

**Head of Environment Services &  
Sustainable Neighbourhoods**  
**Charles Baker**

**Head of Highways & Parking**  
**Jayne Rusbatch**

**Head of Environmental Health,  
Trading Standards & Licensing**  
**Michael Goddard**

**Head of Independent Travel**  
**Daniel Shepherd**

**Corporate Director**  
**Housing**  
Susmita Sen

**Executive Officer**  
Claire Galsworthy

**Director**  
**Housing Estates & Improvement**  
Vacant

**Head of Responsive Repairs**  
Jerry Austin

**Head of Repairs**  
Paul Connolly

**Head of Asset Planning & Capital Delivery**  
Kevin Hartshorn

**Head of Building Safety and Compliance**  
Niall O'Rourke

**Director**  
Vacant

**Head of Homelessness & Allocations**  
Hamid Khan

**Head of Temporary Accommodation**  
Beatrice Cingtho-Taylor

**Executive Culture & Change Advisor**  
Lara Ashley

**Regina Road Programme Lead**  
Robin Smith

**Director**  
**Tenancy**  
Mary Larbie

**Head of Tenancy & Caretaking**  
Victoria Boateng

**Head of Income & Lettings**  
Vacant

**Corporate Director  
Adults, Social Care and Health  
Annette McPartland**

**Director  
Director of Operations  
Simon Robson**

**Head of Adult Safeguarding & Assurance  
Vacant**

**Head of Service Older People  
Sean Olivier**

**Head of Service & Principal Social Worker Adult  
Mental Health  
Valentine Nweze**

**Head of Provider Services  
Simon Wadsworth**

**Head of Business & Service Compliance  
Caroline Baxter**

**Head of Transitions & 18 to 65 years Disability  
Azuka Agbai**

**Director  
Director of Commissioning, Policy &  
Improvement  
Bianca Byrne**

**Strategic Commissioning and Improvements  
Leanne Bobb**

**Improvement  
Richard Eyre**

**Adult Placement & Brokerage & Market  
Management  
Stephen Hopkins**

**Deputy Director, One Croydon  
Laura Jenner**

**Community Equipment Services  
Paul Kouassi**