

Emergency accommodation

What happens next?

If you have been placed in shared emergency accommodation and the council has an ongoing duty to provide accommodation for you, you will be moved into longer term accommodation as soon as it is possible. It is difficult to say how long it will take. You could be offered several different types of accommodation:

- Self-contained bed and breakfast accommodation
- A private sector property on a license
- A temporary tenancy of a council property
- A private sector property on an assured short-hold tenancy, ending the council's duty to provide accommodation
- Housing association leased accommodation
- Other leased accommodation with private landlord

It is most likely that you will be moved to self-contained bed and breakfast accommodation, or bed and breakfast annex accommodation and then onto longer-term accommodation although this is not always the case.

This leaflet contains information as to what you can expect when this happens.

Will I have a choice of accommodation?

You will receive one offer of suitable accommodation unless you find your own private sector accommodation beforehand. You may prefer to find your own accommodation; the information sheet Finding private sector accommodation contains advice on looking for your own accommodation.

How much notice will I get when I have to move?

When you are offered the accommodation you will have to move quickly: this can often be within 24 hours of being notified of your offer.

Will the accommodation be in Croydon?

Not necessarily as there is very limited affordable accommodation available in Croydon which. The Council follows an Out of Borough Placement Procedure and considers issues such as medical, educational and social needs, employment and affordability alongside availability of accommodation in Croydon when deciding whether to offer accommodation outside Croydon.

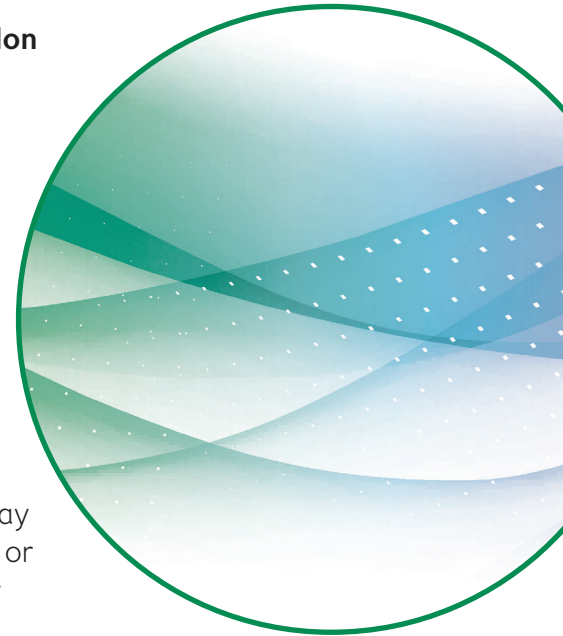
Will the accommodation be furnished?

No, the accommodation will not be furnished. A number of options for securing low-cost furniture in Croydon are listed below:

- Local charity shops selling furniture and electrical goods, for example the British Heart Foundation Shops – George Street, CR0 1PE, Croydon and 120 Woodcote Road, Wallington, SM6 0LY, Missionary Mart – 99 Woodmansterne Road, Carshalton, SM5 4EG and 105 Stafford Road, Wallington, SM5 9AP, Salvation Army – 157 Brighton Road, South Croydon
- Sign up to Croydon Freegle for free used items – www.ilove.freegle.org/Croydon
- Search for used and free items on Gumtree – www.gumtree.com
- Search for used and low priced items at www.vivastreet.co.uk/croydon
- D&N UK Ltd – 152 High Street, Penge sell used electrical goods
- Low cost furniture can be purchased from:
C & C Interiors – 1411-1413 London Road Norbury SW16 6AH,
Discount Furniture – 44 Station Road, West Croydon CR0 2RB
and Priceless carpets (Addington) – 47 Central Parade,
New Addington CR0 0JD

You may be able to apply for a discretionary payment in specific circumstances. For further advice contact the Family Support Worker (details below).

If you have been provided with accommodation outside Croydon you may still be able to sign up to your local Freegle site: www.ilove.freegle.org or search on Gumtree: www.gumtree.com. There will also be local charity shops selling furniture and used goods. Your local authority may have information on these.



Will I get help with removals?

The council is able to assist with organising removals however you will be liable for the cost which is comparable with other commercial removal companies. You may prefer to look at other options, including self-drive van hire or assistance from friends and family.

Where can I go for advice and guidance?

The council employs a Family Support Worker who will provide advice and support to anyone in bed and breakfast hotel accommodation. She will write to you when you first move in with details of the service and how to contact them. The current support worker's contact details are:

Verna Francis (Family Support Worker, Housing Placements Team)

Email: verna.francis@croydon.gov.uk

Secure Email: verna.francis@croydon.gcsx.gov.uk

Tel: 020 8726 6100 Ext.65564 (Except Mondays)

Mobile: 07786 660119 (Except Mondays)