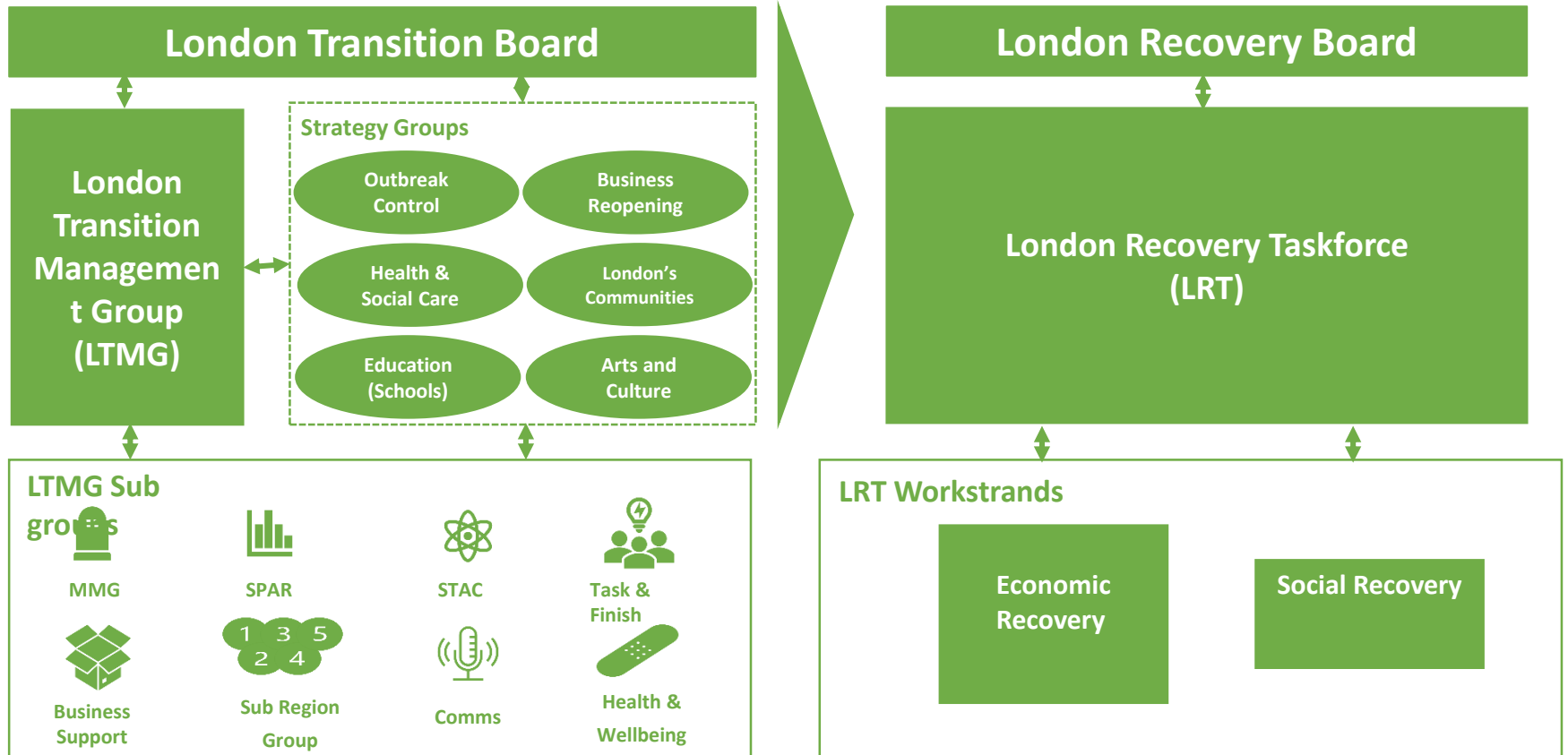


# **LONDON COVID-19 OUTBREAK CONTROL PLAN**

**A CONTAIN AND ESCALATION FRAMEWORK FOR GREATER LONDON**

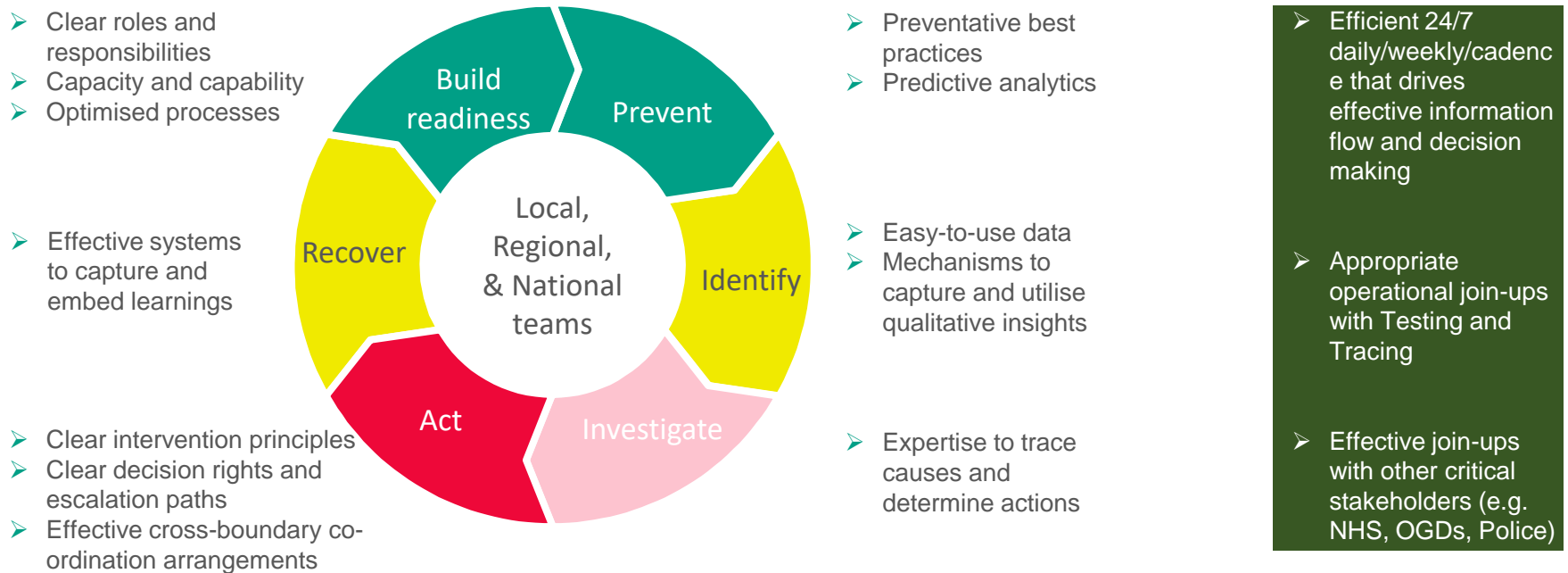
Draft produced by the Evolution of the Epidemic Control Subgroup  
**London Transition Board**

# LONDON COVID-19 STRATEGIC DIRECTION



<u>EXECUTIVE SUMMARY .....</u>	<u>3</u>
<u>PURPOSE .....</u>	
<u>PRINCIPLES .....</u>	<u>8</u>
<u>NATIONAL, REGIONAL &amp; LOCALITY GOVERNANCE.....</u>	<u>12</u>
<u>ADDITIONAL POWERS.....</u>	<u>20</u>
<u>STAGES OF PREVENTION, RESPONSE &amp; ESCALATION.....</u>	<u>17</u>
<u>SITUATIONAL AWARENESS INTELLIGENCE &amp; METRICS.....</u>	<u>26</u>
<u>REPORTING &amp; MANAGEMENT OF ESCALATION.....</u>	<u>31</u>
<u>APPENDICES.....</u>	<u>48</u>

# 6 STEPS TO PREVENT AND MANAGE OUTBREAKS



Need clear expectations for who does what in each individual stage of the process...

...and throughout cycle

# LONDON REGION PHASED APPROACH TO OUTBREAK RESPONSE

Epidemic Level	Borough - Incidence 7-day cases per 100,000	Phase	Key interventions	Priority LA actions	Priority Regional Actions	Priority National Actions
<b>1A</b>	0 - 20	Areas requiring watching brief	<b>Business as usual</b> Testing and Contact tracing Community outreach and support Mass media campaigns Reinforce prevention messaging	Responsible Accountable	Responsible Accountable Consulted Informed	Informed
<b>1B</b>	20 - 25	Areas of national concern	<b>All of the above plus:</b> Increase MTU access Widen Testing and screening options Targeted campaigns Strengthen CT activity Community Outreach	Responsible Accountable Consulted	Responsible Accountable Consulted Informed	Informed Consulted
<b>2</b>	25 - 50	Areas of enhanced support	<b>All of the above plus:</b> Reintroduce epidemic controls Close settings driving epidemic Mandatory masks Restrict social contacts Restrict religious gatherings	Responsible Accountable Consulted Informed	Responsible Accountable Consulted Informed	Responsible Consulted Informed ?Accountable
<b>3</b>	>50	Areas of intervention	<b>All of the above plus:</b> Consider local lockdown Target intervention dependent upon drivers	Responsible Accountable Consulted Informed	Responsible Accountable Consulted Informed	Responsible Accountable Consulted Informed

# PROPOSED EXPECTATIONS OF LOCAL/REGIONAL/NATIONAL LEVELS IN "BAU RESPONSE"

	Build readiness	Prevent	Identify	Investigate	Act	Recover
Local	<ul style="list-style-type: none"> <li>• <b>Build local outbreak readiness</b> incl. outbreak control plans</li> <li>• <b>Build local capacity</b> and capability</li> <li>• Ensure the necessary <b>local preventative actions are enacted</b></li> <li>• <b>Proactively monitor</b> local data/analytics feeds</li> </ul>			<ul style="list-style-type: none"> <li>• <b>Lead incident response</b> and plan/implementation of actions</li> <li>• <b>Trace complex cases</b>, identify contacts, within scope of Tier 1b</li> <li>• Lead development of <b>local testing and tracing strategy</b></li> <li>• Lead delivery of local <b>public comms &amp; engagement plan</b></li> <li>• Draw on stakeholders to <b>access additional support &amp; resource</b></li> <li>• <b>Support co-ordination across boundaries</b> beyond a UTLA</li> </ul>		
Regional	<ul style="list-style-type: none"> <li>• <b>Support local readiness</b> including best-practice sharing</li> <li>• <b>Input into assurance</b> of local readiness</li> </ul>			<ul style="list-style-type: none"> <li>• <b>Support local planning</b> and delivery of incident response</li> <li>• <b>Provide upward visibility</b> of the situation and actions taken</li> <li>• <b>Escalate issues</b> to national level as reqd.</li> <li>• <b>Support capture of learnings</b> and lead on sharing these</li> <li>• <b>Support co-ordination across boundaries</b> beyond a UTLA</li> </ul>		
Nat'l Ops	<ul style="list-style-type: none"> <li>• Develop proposed <b>range of available interventions</b> and criteria</li> <li>• Develop proposed <b>escalation routes</b> and criteria</li> <li>• Drive E2E <b>system readiness</b> and optimise performance</li> <li>• <b>Assure local readiness</b> incl. capability/capacity</li> <li>• Provide guidance on <b>demand to support local capacity build</b></li> <li>• <b>Provide integrated dashboards</b> to support local monitoring</li> <li>• <b>Proactively monitor data and flag issues</b> to local teams</li> </ul>			<ul style="list-style-type: none"> <li>• <b>Prioritise and deliver on requests</b> for add'l support &amp; resource</li> <li>• <b>Support co-ordination across boundaries</b> beyond a UTLA</li> <li>• <b>Lead co-ordination with OGDs to ensure proper join-up</b> and x-WH</li> <li>• <b>Monitor data to track progression</b>; flag issues to local teams</li> </ul>		
Ministers	<ul style="list-style-type: none"> <li>• Agree range of available <b>local interventions and criteria</b></li> <li>• Agree <b>escalation routes</b> and criteria; legislate as needed</li> </ul>			<ul style="list-style-type: none"> <li>• <b>Manage lifting/lowering of national restrictions</b> as appropriate</li> <li>• <b>Parliamentary accountability</b> for the health of the nation</li> </ul>		

# REPORTING & MANAGEMENT OF ESCALATION

## LONDON

- Daily - National IMT meeting attended by PHE Regional Director
- Daily- PHE London IMT meeting with JBC
- Weekly - Wednesday PM Transition Management Group meeting.
- Weekly - Wednesday PM Briefing with Mayor of London and PHE London and NHSE/I London
- Weekly – Friday AM Meeting between PHE, JBC, RC, TMG
- Weekly - Friday PM PHE-ADPH meeting to discuss Pan London situational awareness.
- Fortnightly – London Transition Board Evolution of the Outbreak Subgroup
- Monthly – London Transition Board
- Bi-monthly – London Recovery Board

## NATIONAL

- Daily bronze sitrep reporting focusing on data
- Gillian Bishop – regional convener for the contain process receives the GM narrative by Tuesday morning
- Silver meeting every Weds, Chaired by the CMO, where the RC will feed in qualitative data and local narratives are discussed
- Gold meeting every Thursday, Chaired by Secretary of State, where decisions about national ratings/ escalation categories are made
- Those ratings/decisions are announced later on Thursday
- Localities placed in a national category will be informed on Wednesday, ahead of the public announcement on Thursday ( TBC)

# **LONDON COVID-19 OUTBREAK CONTROL PLAN**

**A CONTAIN AND ESCALATION FRAMEWORK FOR GREATER LONDON**

Draft produced by the Evolution of the Epidemic Control Subgroup  
**London Transition Board**