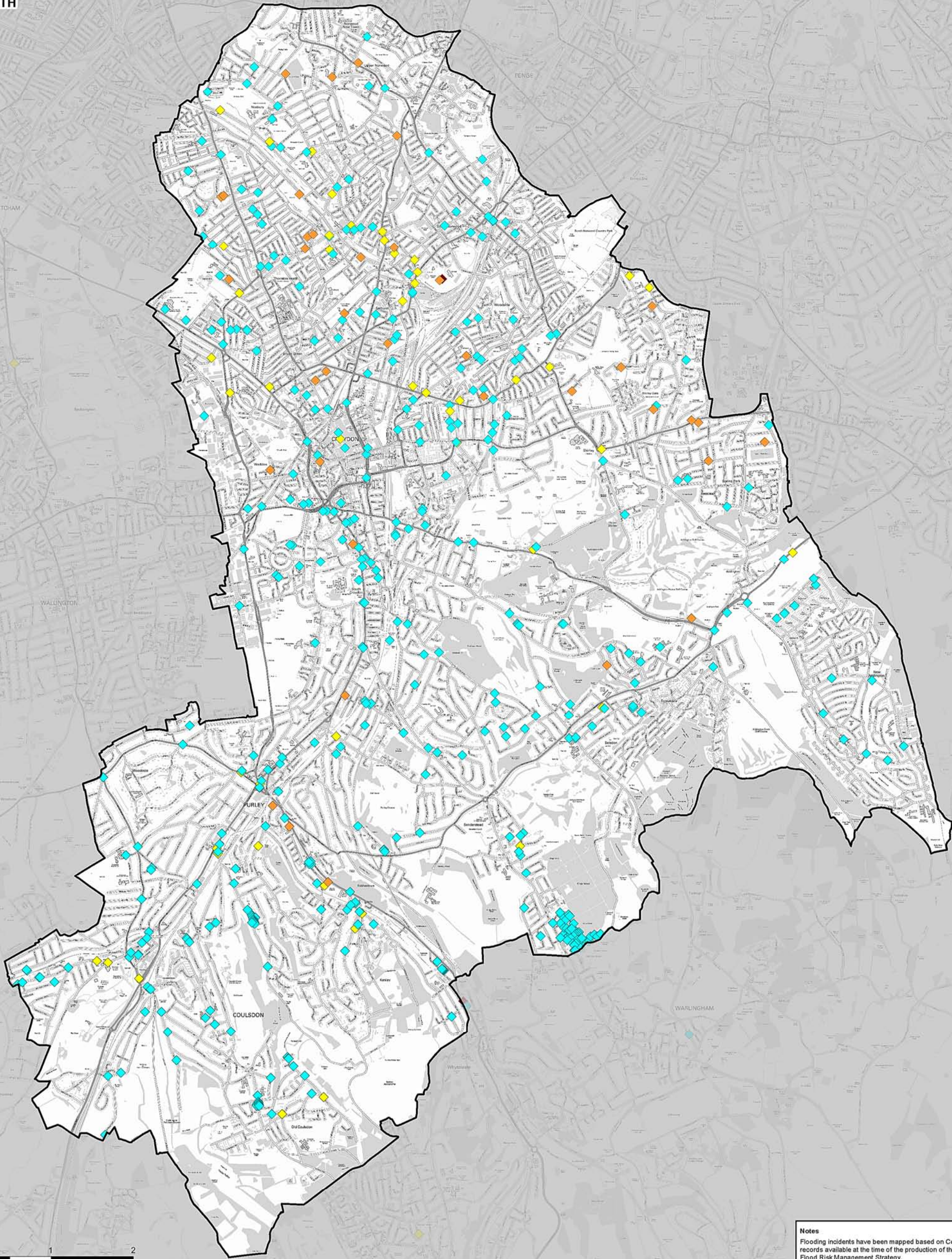


NORTH



Notes
Flooding incidents have been mapped based on Council records available at the time of the production of the Local Flood Risk Management Strategy.
In many cases incidents of flooding may not have been reported to the Council and will therefore not be shown on this map.

- LEGEND**
- LB Croydon boundary
- Reported Flooding Incidents**
- ◆ Surface water (420)
 - ◆ Groundwater (37)
 - ◆ Sewer (54)
 - ◆ Multiple (2)

Purpose of Issue

**DRAFT REPORT
FOR CONSULTATION**

THIS DOCUMENT HAS BEEN PREPARED PURSUANT TO AND SUBJECT TO THE TERMS OF URS' APPOINTMENT BY ITS CLIENT. URS ACCEPTS NO LIABILITY FOR ANY USE OF THIS DOCUMENT OTHER THAN BY ITS ORIGINAL CLIENT OR FOLLOWING URS' EXPRESS AGREEMENT TO SUCH USE, AND ONLY FOR THE PURPOSES FOR WHICH IT WAS PREPARED AND PROVIDED.

Scale at A3: 1:45,000

Drawn Craig Boorman Checked Sarah Kelly

Revision Details

Rev	Chk	Date	By
1			

THIS DRAWING IS TO BE USED ONLY FOR THE PURPOSE OF ISSUE THAT IT WAS ISSUED FOR AND IS SUBJECT TO AMENDMENT

Copyright
Contains Ordnance Survey data © Crown copyright and database right 2014

Job Title

**LONDON BOROUGH OF
CROYDON
LOCAL FLOOD RISK
MANAGEMENT
STRATEGY**

Drawing Title

HISTORIC FLOODING

Client

Wandsworth
merton
CROYDON
Sutton
Royal Kingston

URS Infrastructure & Environment UK Ltd
6-8 Greencoat Place
London
SW1P 1PL
Tel: +44 (0)207 7985000

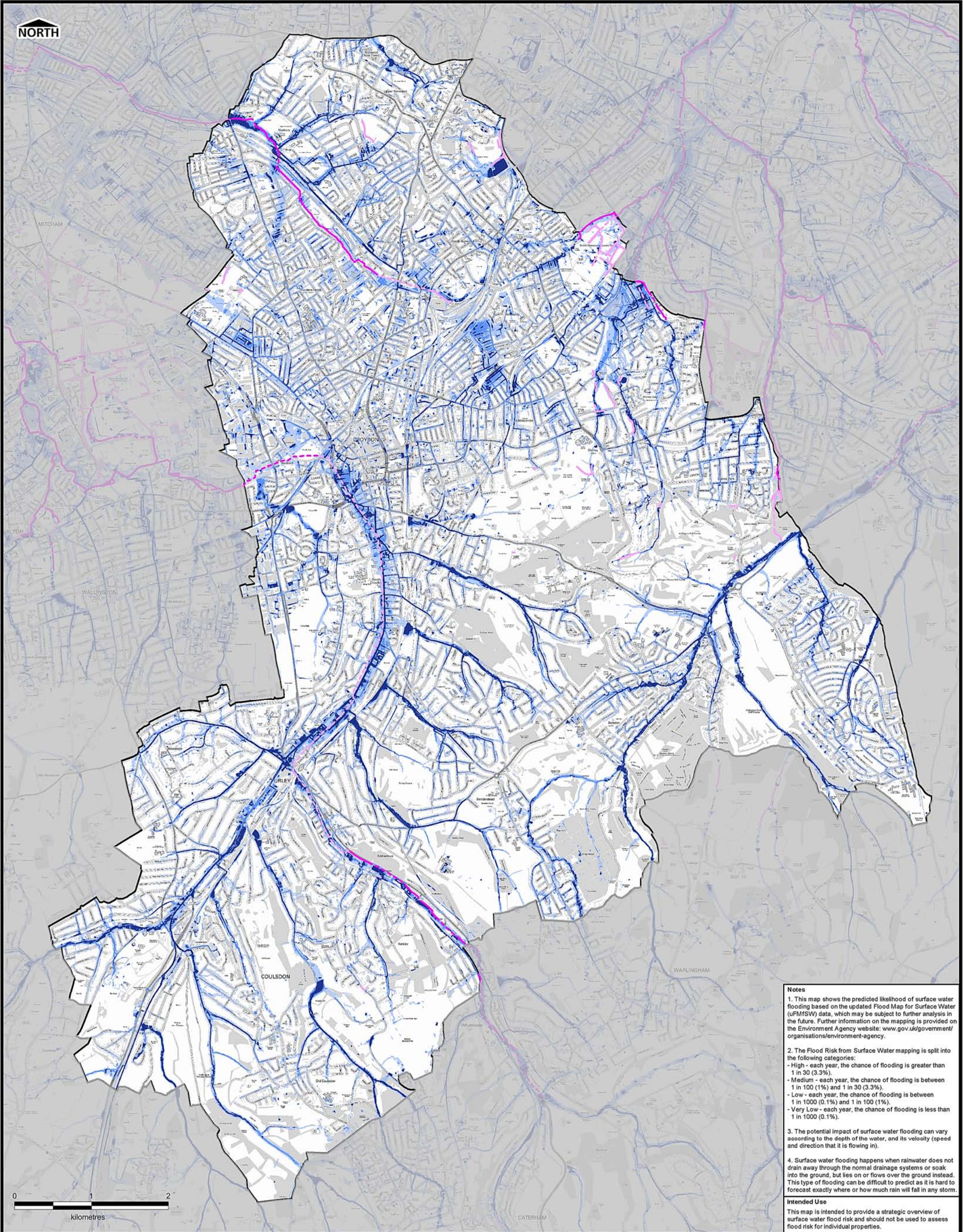
Drawing Number

FIGURE 1

Rev

01

\\ba-wip-00114700 - Water\Water\Projects & Jobs\4706\47069163 - SW London LFRMS\06 WIP\068 GIS



Notes

1. This map shows the predicted likelihood of surface water flooding based on the updated Flood Map for Surface Water (uFMSW) data, which may be subject to further analysis in the future. Further information on the mapping is provided on the Environment Agency website: www.gov.uk/government/organisations/environment-agency.

2. The Flood Risk from Surface Water mapping is split into the following categories:

- High - each year, the chance of flooding is greater than 1 in 30 (3.3%).
- Medium - each year, the chance of flooding is between 1 in 100 (1%) and 1 in 30 (3.3%).
- Low - each year, the chance of flooding is between 1 in 1000 (0.1%) and 1 in 100 (1%).
- Very Low - each year, the chance of flooding is less than 1 in 1000 (0.1%).

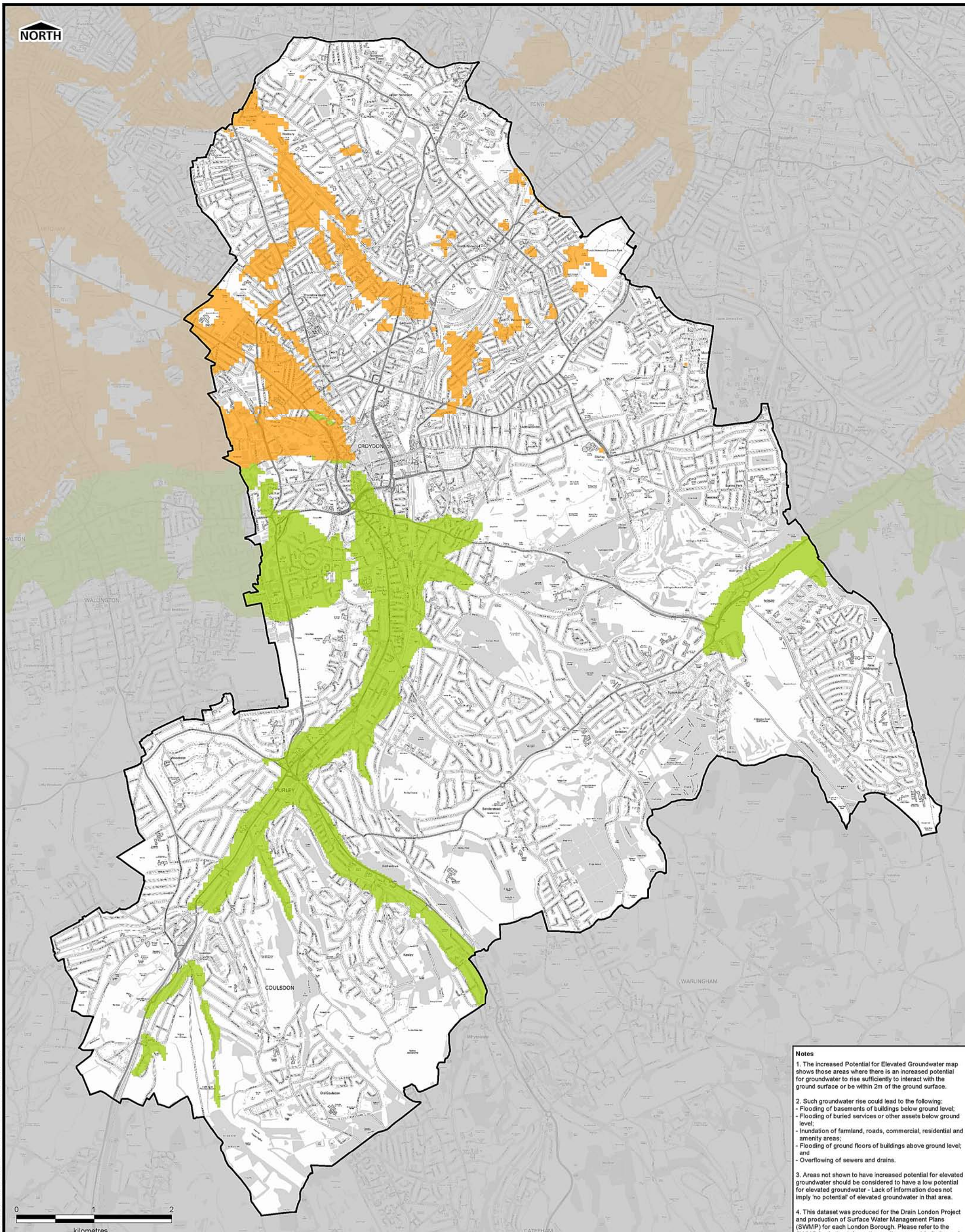
3. The potential impact of surface water flooding can vary according to the depth of the water, and its velocity (speed and direction that it is flowing in).

4. Surface water flooding happens when rainwater does not drain away through the normal drainage systems or soak into the ground, but lies on or flows over the ground instead. This type of flooding can be difficult to predict as it is hard to forecast exactly where or how much rain will fall in any storm.

Intended Use

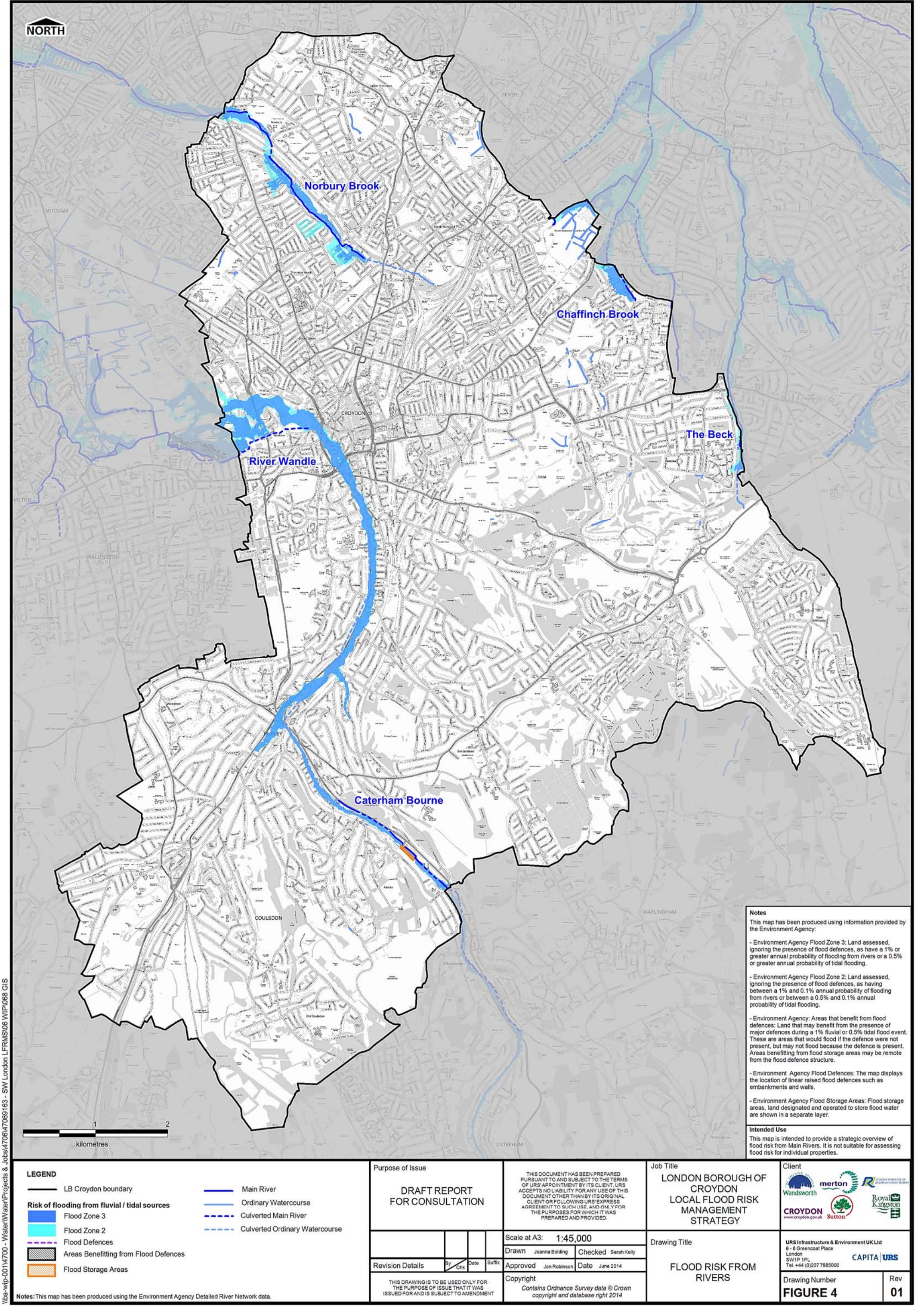
This map is intended to provide a strategic overview of surface water flood risk and should not be used to assess flood risk for individual properties.

<div>LEGEND</div> <div><div><div><div></div></div><div>LB Croydon boundary</div></div><div><div><div><div></div></div><div>High (3.3% AEP)</div></div><div><div><div><div></div></div><div>Medium (1% AEP)</div></div><div><div><div><div></div></div><div>Low (0.1% AEP)</div></div><div><div><div><div></div></div><div>Very Low (<0.1% AEP)</div></div></div><div><div><div><div></div></div><div>Main River</div></div><div><div><div><div></div></div><div>Ordinary Watercourse</div></div><div><div><div><div></div></div><div>Culverted Main River</div></div><div><div><div><div></div></div><div>Culverted Ordinary Watercourse</div></div></div></div></div></div></div></div></div></div>		<div>Purpose of Issue</div> <div>DRAFT REPORT FOR CONSULTATION</div>		<div>THIS DOCUMENT HAS BEEN PREPARED PURSUANT TO AND SUBJECT TO THE TERMS OF URS'S APPOINTMENT BY ITS CLIENT. URS ACCEPTS NO LIABILITY FOR ANY USE OF THIS DOCUMENT OTHER THAN BY ITS ORIGINAL CLIENT OR FOLLOWING URS'S EXPRESS AGREEMENT TO SUCH USE, AND ONLY FOR THE PURPOSES FOR WHICH IT WAS PREPARED AND PROVIDED.</div>		<div>Job Title</div> <div>LONDON BOROUGH OF CROYDON LOCAL FLOOD RISK MANAGEMENT STRATEGY</div>		<div>Client</div> <div><div><div><div></div></div><div>Wandsworth</div></div><div><div><div><div></div></div><div>merton</div></div><div><div><div><div></div></div><div>CROYDON</div></div><div><div><div><div></div></div><div>Sutton</div></div><div><div><div><div></div></div><div>Royal Kingston</div></div></div></div></div></div></div>	
		<div>Scale at A3: 1:45,000</div>		<div>Drawing Title</div> <div>FLOOD RISK FROM SURFACE WATER</div>		<div>URS Infrastructure & Environment UK Ltd 6 - 8 Greencoat Place London SW1P 1PL Tel. +44 (0)207 7985000</div> <div>CAPITA URS</div>			
<div>Revision Details</div> <div><div>By</div><div>Chk</div><div>Date</div><div>Suffix</div></div>		<div>Drawn Joanna Bolding</div> <div>Checked Sarah Kelly</div> <div>Approved Jon Robinson</div> <div>Date June 2014</div> <div>Copyright</div> <div>Contains Ordnance Survey data © Crown copyright and database right 2014</div>				<div>Drawing Number</div> <div>FIGURE 2</div>		<div>Rev</div> <div>01</div>	
<div>THIS DRAWING IS TO BE USED ONLY FOR THE PURPOSE OF ISSUE THAT IT WAS ISSUED FOR AND IS SUBJECT TO AMENDMENT</div>									



Notes
<p>1. The increased Potential for Elevated Groundwater map shows those areas where there is an increased potential for groundwater to rise sufficiently to interact with the ground surface or be within 2m of the ground surface.</p>
<p>2. Such groundwater rise could lead to the following:</p> <ul style="list-style-type: none"> - Flooding of basements of buildings below ground level; - Flooding of buried services or other assets below ground level; - Inundation of farmland, roads, commercial, residential and amenity areas; - Flooding of ground floors of buildings above ground level; and - Overflowing of sewers and drains.
<p>3. Areas not shown to have increased potential for elevated groundwater should be considered to have a low potential for elevated groundwater - Lack of information does not imply 'no potential' of elevated groundwater in that area.</p>
<p>4. This dataset was produced for the Drain London Project and production of Surface Water Management Plans (SWMP) for each London Borough. Please refer to the SWMP for further information on the use and limitations of the dataset.</p>

<div>LEGEND</div> <div><div></div>LB Croydon boundary</div> <div>Increased Potential for Elevated Groundwater in</div> <div><div></div>Permeable Superficial Deposits</div> <div><div></div>Consolidated Aquifers</div>	<div>Purpose of Issue</div> <div>DRAFT REPORT FOR CONSULTATION</div> <div>THIS DOCUMENT HAS BEEN PREPARED PURSUANT TO AND SUBJECT TO THE TERMS OF URS APPOINTMENT BY ITS CLIENT. URS ACCEPTS NO LIABILITY FOR ANY USE OF THIS DOCUMENT OTHER THAN BY ITS ORIGINAL CLIENT OR FOLLOWING URS'S EXPRESS AGREEMENT TO SUCH USE, AND ONLY FOR THE PURPOSES FOR WHICH IT WAS PREPARED AND PROVIDED.</div>	<div>Job Title</div> <div>LONDON BOROUGH OF CROYDON LOCAL FLOOD RISK MANAGEMENT STRATEGY</div> <div><div><div><div><div></div><div>Wandsworth</div></div><div><div></div><div>merton</div></div><div><div></div><div>ROYAL BOROUGH OF KINGSTON UPON THAMES</div></div></div><div><div><div></div><div>CROYDON</div><div>www.croydon.gov.uk</div></div><div><div></div><div>Sutton</div></div><div><div></div><div>Royal Kingston</div></div></div></div></div>
	<div></div> <div></div> <div></div> <div></div> <div>Scale at A3: 1:45,000</div> <div>Drawn Joanne Bolding</div> <div>Checked Sarah Kelly</div>	<div>Drawing Title</div> <div>URS Infrastructure & Environment UK Ltd 6 - 8 Greencoast Place London SW1P 1PL Tel. +44 (0)207 7985000</div> <div>CAPITA URS</div>
	<div>Revision Details</div> <div>By Ctk</div> <div>Date</div> <div>Suffix</div> <div>Approved Jon Robinson</div> <div>Date June 2014</div>	<div>Drawing Number</div> <div>FIGURE 3</div> <div>Rev 01</div>
	<div>THIS DRAWING IS TO BE USED ONLY FOR THE PURPOSE OF ISSUE THAT IT WAS ISSUED FOR AND IS SUBJECT TO AMENDMENT</div>	<div>Copyright</div> <div>Contains Ordnance Survey data © Crown copyright and database right 2014</div>



Notes

This map has been produced using information provided by the Environment Agency:

- Environment Agency Flood Zone 3: Land assessed, ignoring the presence of flood defences, as having a 1% or greater annual probability of flooding from rivers or a 0.5% or greater annual probability of tidal flooding.
- Environment Agency Flood Zone 2: Land assessed, ignoring the presence of flood defences, as having between a 1% and 0.1% annual probability of flooding from rivers or between a 0.5% and 0.1% annual probability of tidal flooding.
- Environment Agency: Areas that benefit from flood defences: Land that may benefit from the presence of major defences during a 1% fluvial or 0.5% tidal flood event. These are areas that would flood if the defence were not present, but may not flood because the defence is present. Areas benefitting from flood storage areas may be remote from the flood defence structure.
- Environment Agency Flood Defences: The map displays the location of linear raised flood defences such as embankments and walls.
- Environment Agency Flood Storage Areas: Flood storage areas, land designated and operated to store flood water are shown in a separate layer.

Intended Use

This map is intended to provide a strategic overview of flood risk from Main Rivers. It is not suitable for assessing flood risk for individual properties.

LEGEND

— LB Croydon boundary

Risk of flooding from fluvial / tidal sources

Flood Zone 3

Flood Zone 2

Flood Defences

Areas Benefitting from Flood Defences

Flood Storage Areas

Main River

Ordinary Watercourse

Culverted Main River

Culverted Ordinary Watercourse

Purpose of Issue			
DRAFT REPORT FOR CONSULTATION			
Revision Details			
By	Chk	Date	Suffix
THIS DRAWING IS TO BE USED ONLY FOR THE PURPOSE OF ISSUE THAT IT WAS ISSUED FOR AND IS SUBJECT TO AMENDMENT			

THIS DOCUMENT HAS BEEN PREPARED PURSUANT TO AND SUBJECT TO THE TERMS OF URS' APPOINTMENT BY ITS CLIENT. URS ACCEPTS NO LIABILITY FOR ANY USE OF THIS DOCUMENT OTHER THAN BY ITS ORIGINAL CLIENT OR FOLLOWING URS' EXPRESS AGREEMENT TO SUCH USE, AND ONLY FOR THE PURPOSES FOR WHICH IT WAS PREPARED AND PROVIDED.

Scale at A3: 1:45,000

Drawn	Joanna Bolding	Checked	Sarah Kelly
Approved	Jon Robinson	Date	June 2014

Copyright
Contains Ordnance Survey data © Crown copyright and database right 2014

Job Title

LONDON BOROUGH OF CROYDON
LOCAL FLOOD RISK
MANAGEMENT
STRATEGY

Drawing Title

FLOOD RISK FROM
RIVERS

Client

Wandsworth

merton

Royal Kingston

CROYDON

Sutton

URS Infrastructure & Environment UK Ltd
6-8 Greencoat Place
London
SW1P 1PL
Tel: +44 (0)207 7985000

CAPITA | URS

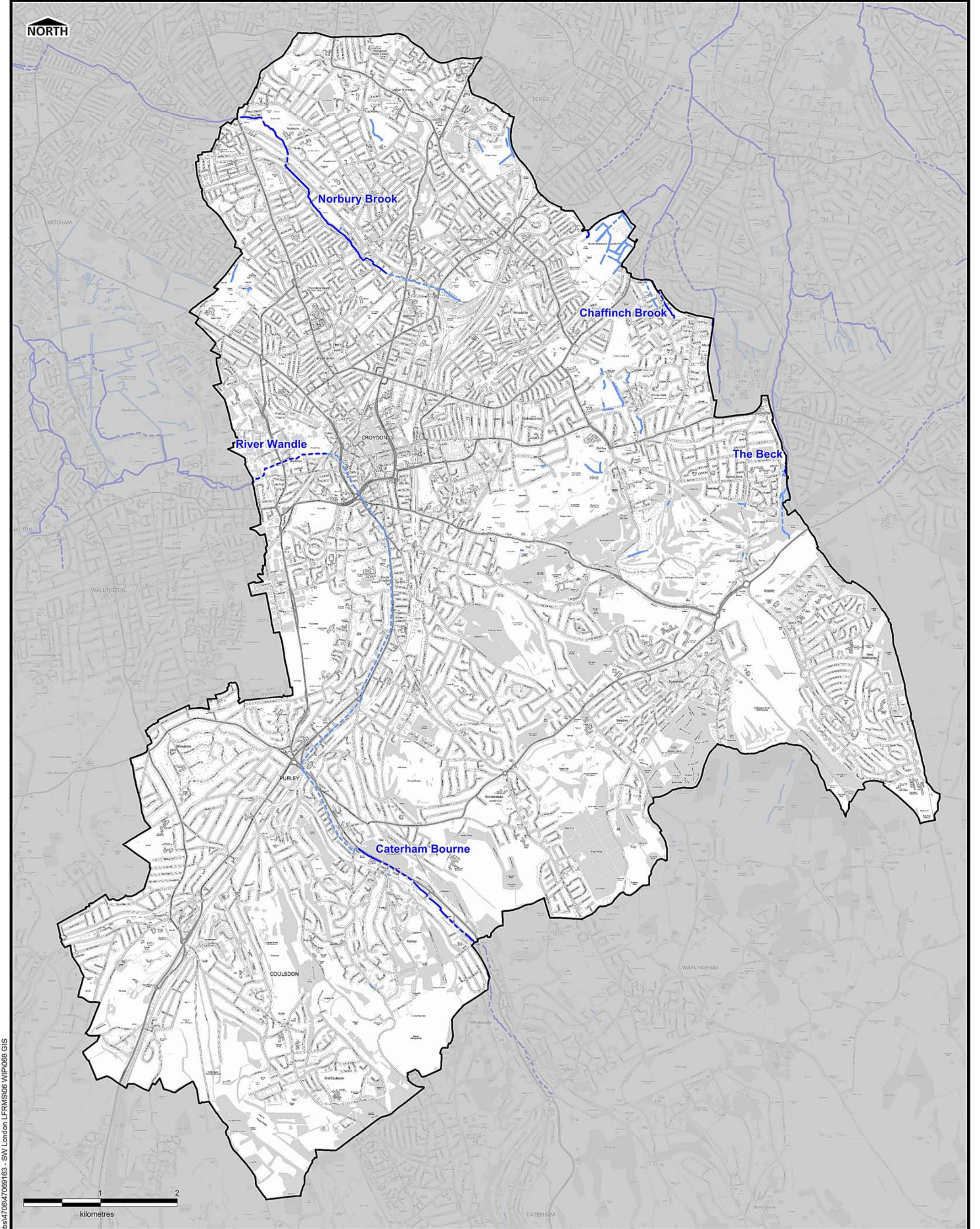
Drawing Number

FIGURE 4

Rev

01

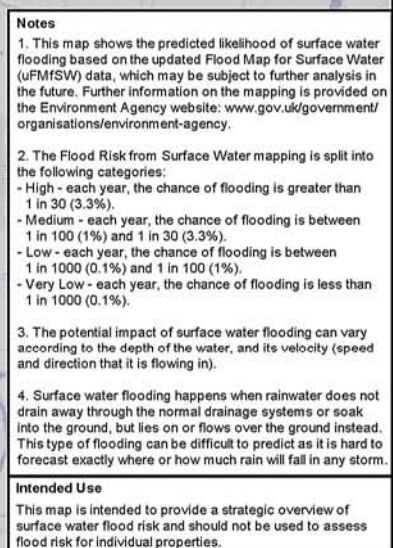
\\ba-wip-00114700 - WaterWater\Projects & Jobs\470614706163 - SW London LFRMS\06 WIP\068 GIS



\\ba-wip-00114700 - Water\Water\Projects & Jobs\4706\47069163 - SW London LFRMS\06 WIP\068 GIS

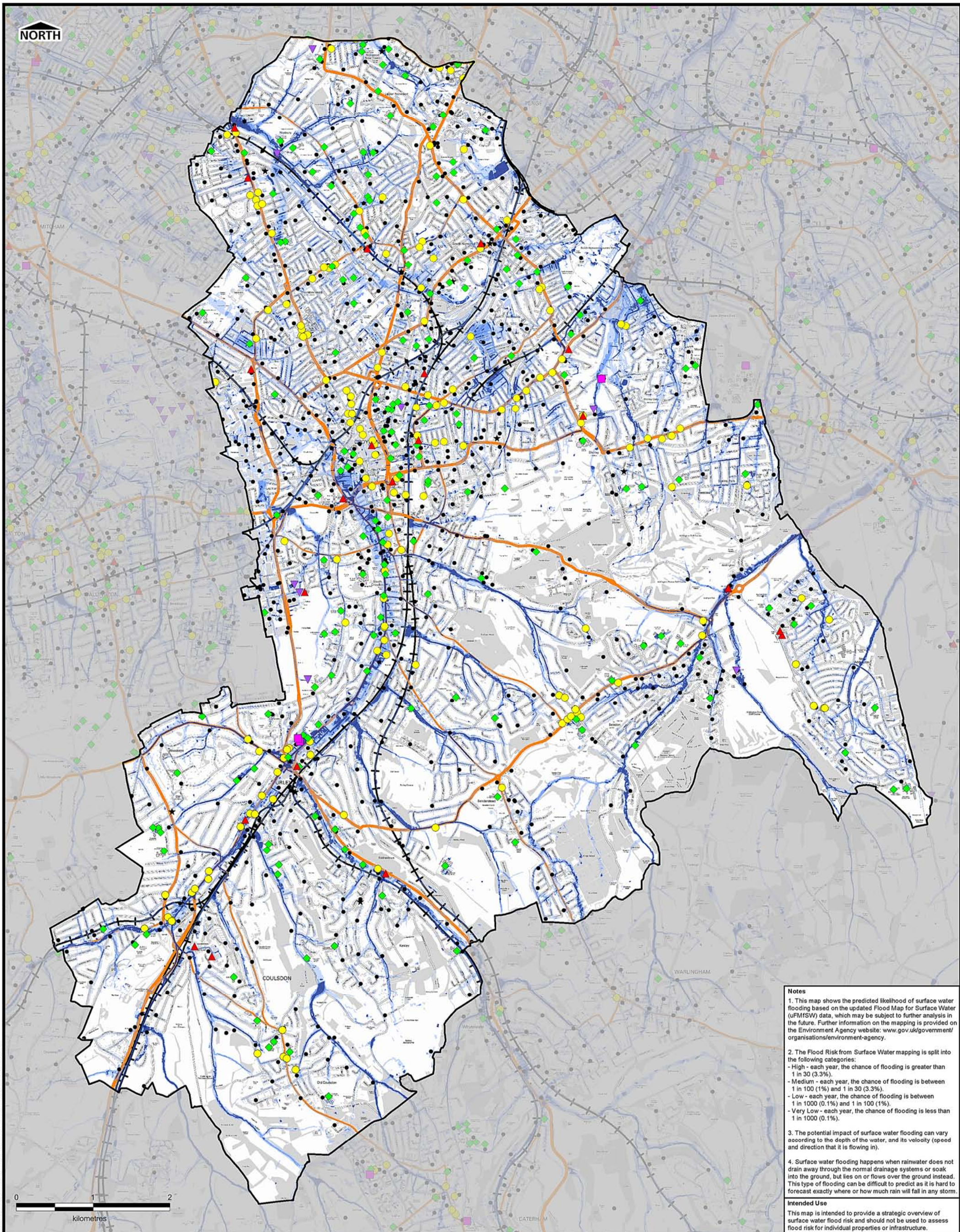
<div>LEGEND</div> <div><div><div></div></div><div>LB Croydon boundary</div></div> <div><div><div></div></div><div>Main River</div></div> <div><div><div></div></div><div>Ordinary Watercourse</div></div> <div><div><div></div></div><div>Culverted Main River</div></div> <div><div><div></div></div><div>Culverted Ordinary Watercourse</div></div>

Notes: This map has been produced using the Environment Agency Detailed River Network data.

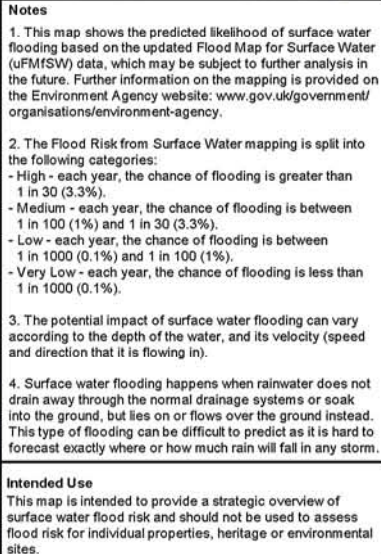























<div>LEGEND</div> <div><div><div></div><div>LB Croydon boundary</div></div><div><div></div><div>Critical Drainage Area Boundary</div></div></div> <div>Risk of Flooding from Surface Water</div> <div><div><div></div><div>High (3.3% AEP)</div></div><div><div></div><div>Medium (1% AEP)</div></div><div><div></div><div>Low (0.1% AEP)</div></div><div><div></div><div>Very Low (<0.1% AEP)</div></div></div>	<div>Purpose of Issue</div> <div>DRAFT REPORT FOR CONSULTATION</div> <div>THIS DOCUMENT HAS BEEN PREPARED PURSUANT TO AND SUBJECT TO THE TERMS OF URS APPOINTMENT BY ITS CLIENT. URS ACCEPTS NO LIABILITY FOR ANY USE OF THIS DOCUMENT OTHER THAN BY ITS ORIGINAL CLIENT OR FOLLOWING URS EXPRESS AGREEMENT TO SUCH USE, AND ONLY FOR THE PURPOSES FOR WHICH IT WAS PREPARED AND PROVIDED.</div>	<div>Job Title</div> <div>LONDON BOROUGH OF CROYDON LOCAL FLOOD RISK MANAGEMENT STRATEGY</div> <div><div><div><div><div></div><div>Wandsworth</div></div><div><div></div><div>merton</div></div><div><div></div><div>CROYDON</div><div>www.croydon.gov.uk</div></div><div><div></div><div>Sutton</div></div><div><div></div><div>Royal Kingston</div></div></div></div></div>	<div>Client</div> <div><div><div><div><div></div><div>Wandsworth</div></div><div><div></div><div>merton</div></div><div><div></div><div>CROYDON</div><div>www.croydon.gov.uk</div></div><div><div></div><div>Sutton</div></div><div><div></div><div>Royal Kingston</div></div></div></div></div>		
	<div><div><div></div><div></div><div></div><div></div></div></div>	<div>Scale at A3:</div> <div>1:45,000</div>	<div>Drawing Title</div> <div>SURFACE WATER CRITICAL DRAINAGE AREAS</div>	<div>URS Infrastructure & Environment UK Ltd 6 - 8 Greencoat Place London SW1P 1PL Tel: +44 (0)207 7985000</div> <div>CAPITA URS</div>	
	<div>Revision Details</div> <div><div>By</div><div>Chk</div><div>Date</div><div>Suffix</div></div>	<div>Drawn</div> <div>Joanne Bolding</div> <div>Checked</div> <div>Sarah Kelly</div> <div>Approved</div> <div>Jon Robinson</div> <div>Date</div> <div>June 2014</div>		<div>Drawing Number</div> <div>FIGURE 6</div>	<div>Rev</div> <div>01</div>
	<div>THIS DRAWING IS TO BE USED ONLY FOR THE PURPOSE OF ISSUING IT AS ISSUED FOR AND IS SUBJECT TO AMENDMENT</div>	<div>Copyright</div> <div>Contains Ordnance Survey data © Crown copyright and database right 2014</div>			

\\ba-wip-00114700 - Water\Water\Projects & Jobs\4706\47069163 - SW London LFRMS\06 WIP\068 GIS



LEGEND		Purpose of Issue		Job Title		Client	
Risk of Flooding from Surface Water		Critical Infrastructure		LONDON BOROUGH OF CROYDON		merton	
High (3.3% AEP)		Emergency Services (Fire, Police and Ambulance Station)		LOCAL FLOOD RISK		CROYDON	
Medium (1% AEP)		Hospital		MANAGEMENT		SWIP 1PL	
Low (0.1% AEP)		School, Nursery, College or University		STRATEGY		Capita	
Very Low (<0.1% AEP)		Surgery or Health Care Centre		Drawing Title		URS Infrastructure & Environment UK Ltd	
LB Croydon boundary		Nursing / Care Home		FLOOD RISK FROM		6 - 8 Greencoat Place	
		Sewage Treatment		SURFACE WATER:		London	
		Electricity Installation		CRITICAL INFRASTRUCTURE		SWIP 1PL	
				& TRANSPORT		Tel: +44 (0)207 7985000	
				Scale at A3: 1:45,000		Rev	
				Drawn Joanna Bolding		01	
				Checked Sarah Kelly			
				Approved Jon Robinson			
				Date June 2014			
				Copyright			
				Contains Ordnance Survey data © Crown			
				copyright and database right 2014			



LEGEND		Environmental Sites		Heritage Sites		Purpose of Issue		Job Title		Client	
Risk of Flooding from Surface Water		Site of Special Scientific Interest (SSSI)		World Heritage Site		DRAFT REPORT FOR CONSULTATION		LONDON BOROUGH OF CROYDON LOCAL FLOOD RISK MANAGEMENT STRATEGY		     CROYDON www.croydon.gov.uk	
	High (3.3% AEP)		Site of Special Scientific Interest (SSSI)		World Heritage Site						
	Medium (1% AEP)		Special Protection Area (SPA)		Schedule of Ancient Monuments						
	Low (0.1% AEP)		Special Area of Conservation (SAC)		Parks & Gardens of Special Historic Interest						
	Very Low (<0.1% AEP)		Ramsar Site		Listed Building						
	LB Croydon boundary		National Nature Reserve (NNR)								
			Local Nature Reserve (LNR)								
			Area of Outstanding Natural Beauty (AOB)								