



## BACKGROUND

- Norbury Library was built in 1931.
- The building comprises of the library on the ground floor and a community space on the first floor.
- One of the main striking elements are the large suspended glass ceilings or 'Lay-lights' which are designed to maximise diffused light into the public spaces below.
- The exterior and interior period features largely remain intact although some elements such as the original parquet wooden flooring have been hidden by carpets.



# YOUR VIEWS

Library users have consistently told us that access to books, together with space to study, learn and to use computers were most important to them in a library.

As well as a refreshed book stock, the new-look, fully accessible Norbury Library will be a more flexible space with many different areas for smart working – including open tables, breakout areas. We will also be installing a new, faster IT network, new computers and improved wi-fi.

# YOU SAID, WE DID

On 11 May 2019 over 100 people came to see the proposals for Norbury Library and share their views.

***“Delighted that the upstairs room is going to be useful”***

***“I love my library”***

***“Exciting news for Norbury”***

***“Well done Croydon Council”***

***“I work at home a lot but would come for a break if better facilities”***

***“Norbury Library definitely needs an update, so happy to hear this is happening this year.”***

Here are some of the additional suggestions you made.

YOU SAID	WE DID
Free space for group activities (like the knitting group) and be able to hire space for events.	We will continue to encourage free use of the space by local community groups and the upstairs community room will be available for bookings and community events.
More events and activities for young people, as well as for older people, those with special needs or dementia.	This will be central to our programming in Norbury Library, liaising with the local community
A café run by community or volunteers or local businesses (i.e. local Norbury coffee provider)	We are contacting businesses to investigate local interest in providing a café
Regular films upstairs for all ages and suggestions for local talks	Thank you for all the suggestions, which we will consider.
Sunday opening	There will be access out of hours for registered users
The library to be fully accessible for wheelchair users	This has been included in the final design
To keep the historical features of the library – such as the glass ceiling and the historical facade	We will be renewing the roof and retaining the original glass. Traditional features, such as the façade, are being retained while incorporating access to the building through a modern extension.
Provision for car parking especially if there are more events	There is no opportunity to provide additional parking, however we are working with TfL to improve public transport access to the library.
A dedicated area with soft furnishings, bean bags, circular window seats for children/autistic-friendly Sustainable materials used for the refurbishment	This has been included in the final design of the children’s library.
Notice boards like those in supermarkets	We are planning to provide notice boards

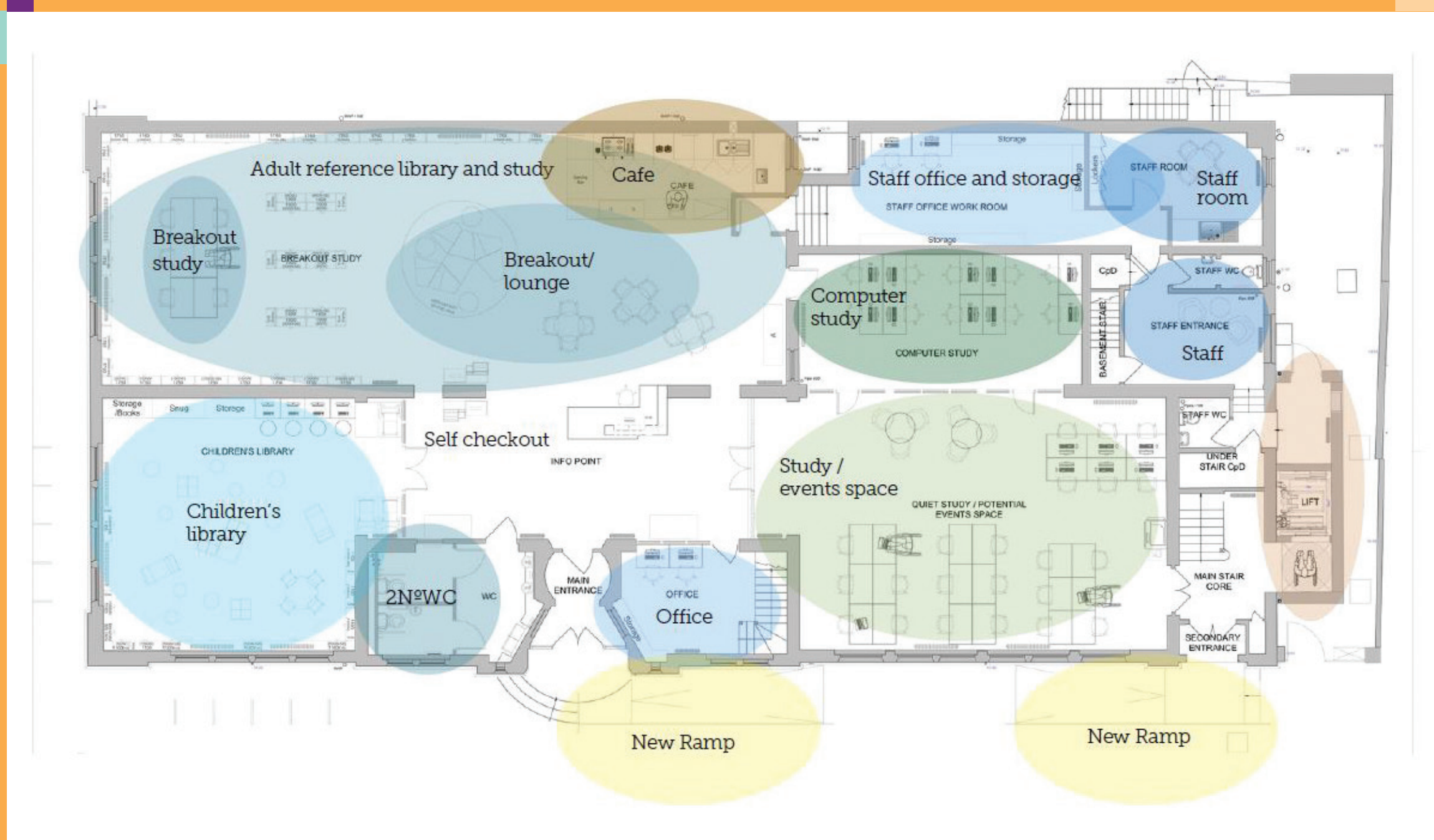
## Temporary closure

You also wanted to know what will happen when the library has to close for the refurbishment works.

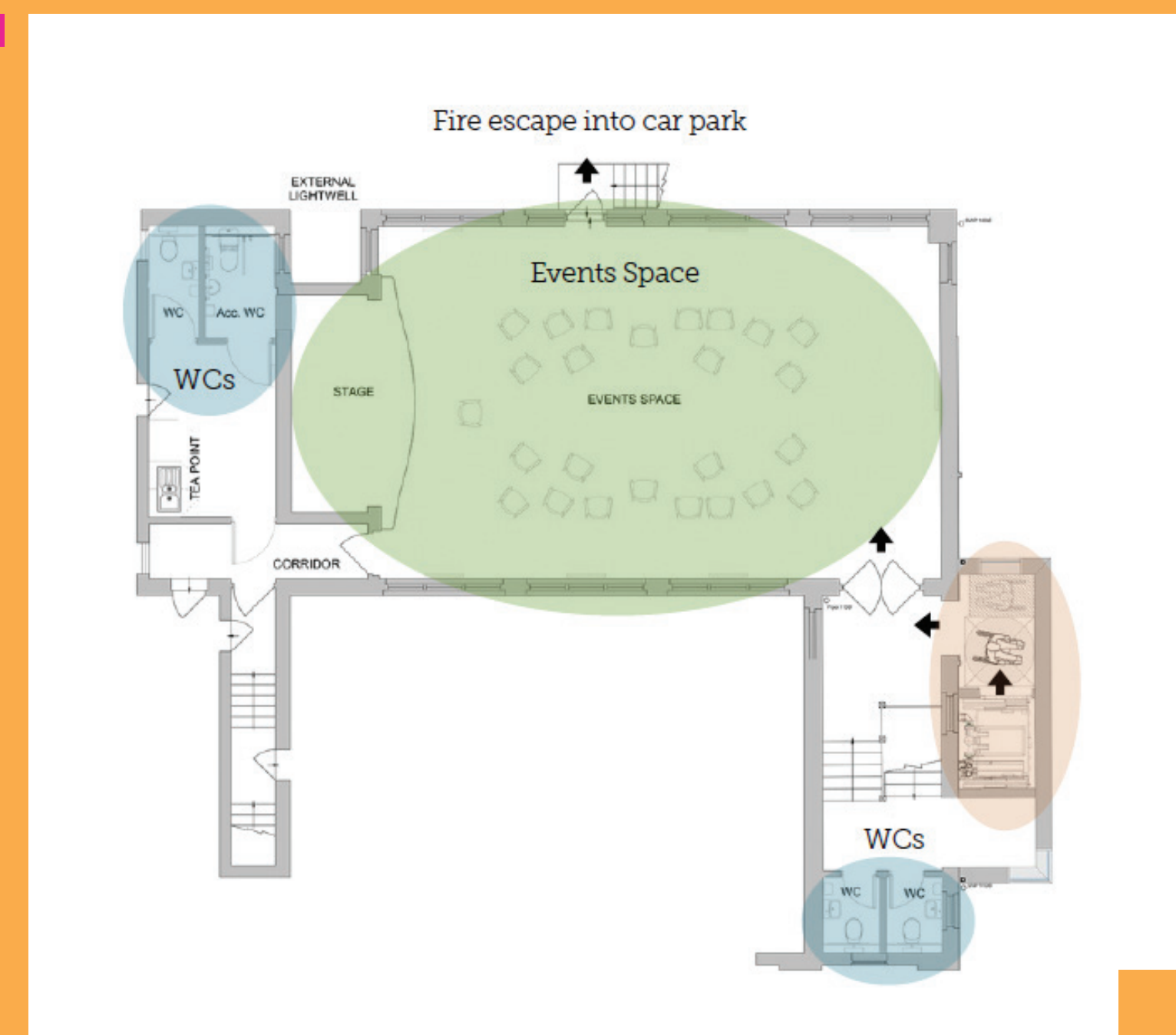
During the closure we will have a small collection of books available as a popup library in Harlow Hall. We’ll also let you know about the regular activities in other nearby libraries.

From September until re-opening the local councillor surgeries will take place between 11:00 and 12:00 at Norbury Methodist Church, 2A Pollards Hill North, Norbury, SW16 4NL.





GROUND FLOOR



FIRST FLOOR

## THE PROPOSED DESIGN

- Library staff have been working with specialist library designers to design a modern library with improved, accessible community space.
- During public engagement activities in 2016 and 2018, library users consistently responded that access to books, together with space to study, learn and to use computers were most important to them about their library.
- All areas to be redecorated and new furniture introduced.
- Children's library and events room to swap places, which will help reduce the level of noise.
- In library hours the flexible events space will also be used as a large study/break out area connected to the quiet study area via the original glazed timber doors.
- New frameless glass doors will be added to the children's library, and events space.
- New LED lighting to be introduced throughout the library.
- Main library will have many different areas for smart working, with a variety of study scenarios from booths to open tables, lounge chairs, and short stay work spaces with high stools.
- First floor events room to be made fully accessible with the addition of a lift added to the side of the building.





## THE LOOK & FEEL

### UPDATED TIMELINE

- 2 September – Library closed for refurbishment
- Spring 2020 – Library re-opens
- While the library is closed there will be pop-up activities at other venues in the area – please check [www.croydon.gov.uk/libraries](http://www.croydon.gov.uk/libraries) for more information and updates on the refurbishment works.

Please note that images are indicative and the final design may differ.





CROYDON LIBRARIES  
**LIBRARY PLAN**  
INFORM • INVOLVE • INSPIRE  
2019 - 2028

**CROYDON** | Delivering  
www.croydon.gov.uk for Croydon

# LIBRARY PLAN 2019-28

## Croydon Libraries Vision:

### Inform

Connecting residents to information, activities and services that will benefit them

### Involve

A service that is shaped by residents and easily adapts to meet the changing needs of the communities we serve

### Inspire

Creative library spaces that offer residents opportunities to have fun, learn and connect with others





# EVENTS AND ACTIVITIES

We are bringing the first floor community room back to life to enable different types of events in a flexible space that can be configured in many ways. You told us you would like to see regular community events, talks, classes, and cultural activities such as music and dance for all ages. We will work with the community to create a programme of events for this re-energised space.