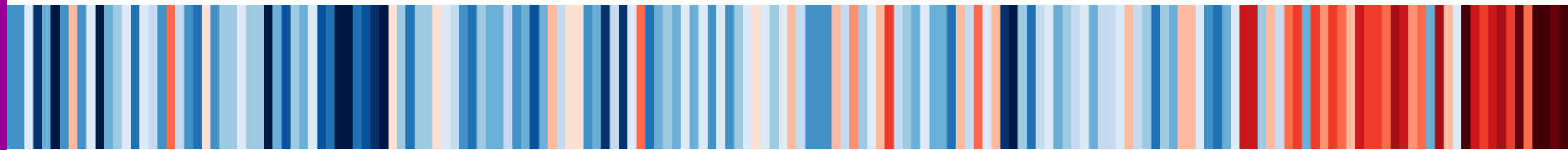


**Croydon's
Climate
Action Report
2025-26**



CROYDON
www.croydon.gov.uk

June 2026

Contents	
Executive Mayor's Foreword	Page 3
Climate Action in Croydon	Page 4
Key Highlights	Pages 5
Borough and Council Emissions	Pages 6
Progress Update on Climate Action Plan	Pages 14
Revisions to the Climate Action Plan	Page 30
Community in Climate Action	Page 31

Mayor's Foreword

I am pleased to introduce Croydon's first Climate Action Annual Report, which sets out the progress we have made following the adoption of our Climate Action Plan in June 2025. This report highlights the collective efforts across the Council and our partners to reduce carbon emissions, strengthen climate resilience and support a greener, healthier borough.

Croydon Council declared a climate emergency in 2019 and adopted the Carbon Neutral Action Plan in February 2022. When I was elected, I was clear that our approach needed to move beyond broad ambition and focus on practical deliverable action. The Carbon Neutral Action Plan was updated and replaced by the Climate Action Plan in 2025. It sets out clearer priorities, more specific actions and a stronger focus on delivery to accelerate progress towards Croydon's climate objectives.

Over the past year, we have taken important steps to build strong foundations for climate action. These include establishing clear governance and improving data to develop pathways for decarbonisation and adaptation. Alongside this, we have delivered tangible improvements across transport, housing, green spaces and community engagement.

We know that addressing the climate challenge requires sustained commitment and collaboration. This report demonstrates our determination to lead by example, work in partnership with residents and communities, we are building momentum for change and supporting a just transition to a low-carbon future.

While there is more to do, this report demonstrates the progress being made and the ambition we have for the years ahead. Together, we will continue to accelerate delivery, protect our environment, and create a more sustainable, resilient and thriving Croydon for current and future generations.



Climate Action in Croydon

This is Croydon Council's first Climate Action Annual Report, following the formal approval of the Croydon Climate Action Plan in June 2025. The report provides an overview of progress made to date, highlighting key achievements arising from actions set out in the Climate Action Plan, alongside wider work being delivered across Council services to reduce carbon emissions and support a more sustainable borough.

Croydon Council declared a climate emergency in 2019 and adopted the Carbon Neutral Action Plan in 2022. The newly elected Executive Mayor, requested a comprehensive review of the Carbon Neutral Action Plan to strengthen aspiration, clarity and deliverability.

The Carbon Neutral Action Plan was updated and replaced by the Climate Action Plan in June 2025. The updated plan sets out clearer priorities and more specific actions to accelerate progress towards Croydon's climate objectives.

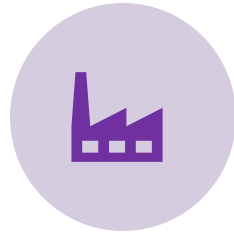
The Climate Action Annual Report is a key commitment within the Climate Action Plan. It plays an important role in tracking progress, supporting transparency and accountability, and maintaining momentum on climate action across the Council and the borough.

The Climate Action Plan provides for an annual review and revision process, ensuring that the Council can respond to new evidence, policy changes, funding opportunities and emerging best practice. This approach supports continuous improvement and helps identify opportunities to strengthen and accelerate climate action. These new and emerging actions identified for delivery will be included in the report and the climate work plan.

Key Highlights



**CLIMATE ACTION
FORUM
ESTABLISHED**



**SUPPLY CHAIN
EMISSIONS
REPORTING**



**STREET TREE
PLANTING - 74
NEW STREET
TREES**



**FLOOD
MANAGEMENT
AND SUDS
IMPLEMENTED**



**ENVIRONMENTAL
IMPLICATIONS
EMBEDDED INTO
PROCUREMENT
PROCESSES**



**INITIAL
ASSESSMENT
OF 100 COUNCIL
HOMES
COMPLETED.**



**NEW CYCLE
INFRASTRUCTURE,
CYCLE TRAINING,
BUS PRIORITY
SCHEMES, AND
FEASIBILITY WORK
FOR RAIL STATION
ENHANCEMENTS.**



**CLIMATE LITERACY
INITIATED IN THE
COUNCIL**



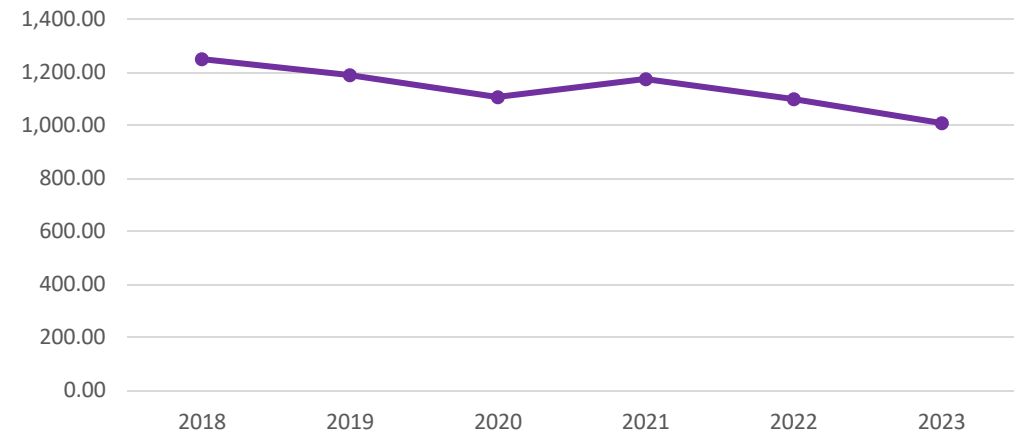
**CLIMATE RISK
ASSESSMENT
COMPLETED**

Borough and Council Emissions

Borough-wide greenhouse gas (GHG) emissions for Croydon represent all emissions generated within the borough boundary, covering homes, transport, businesses, industry and public sector activity.

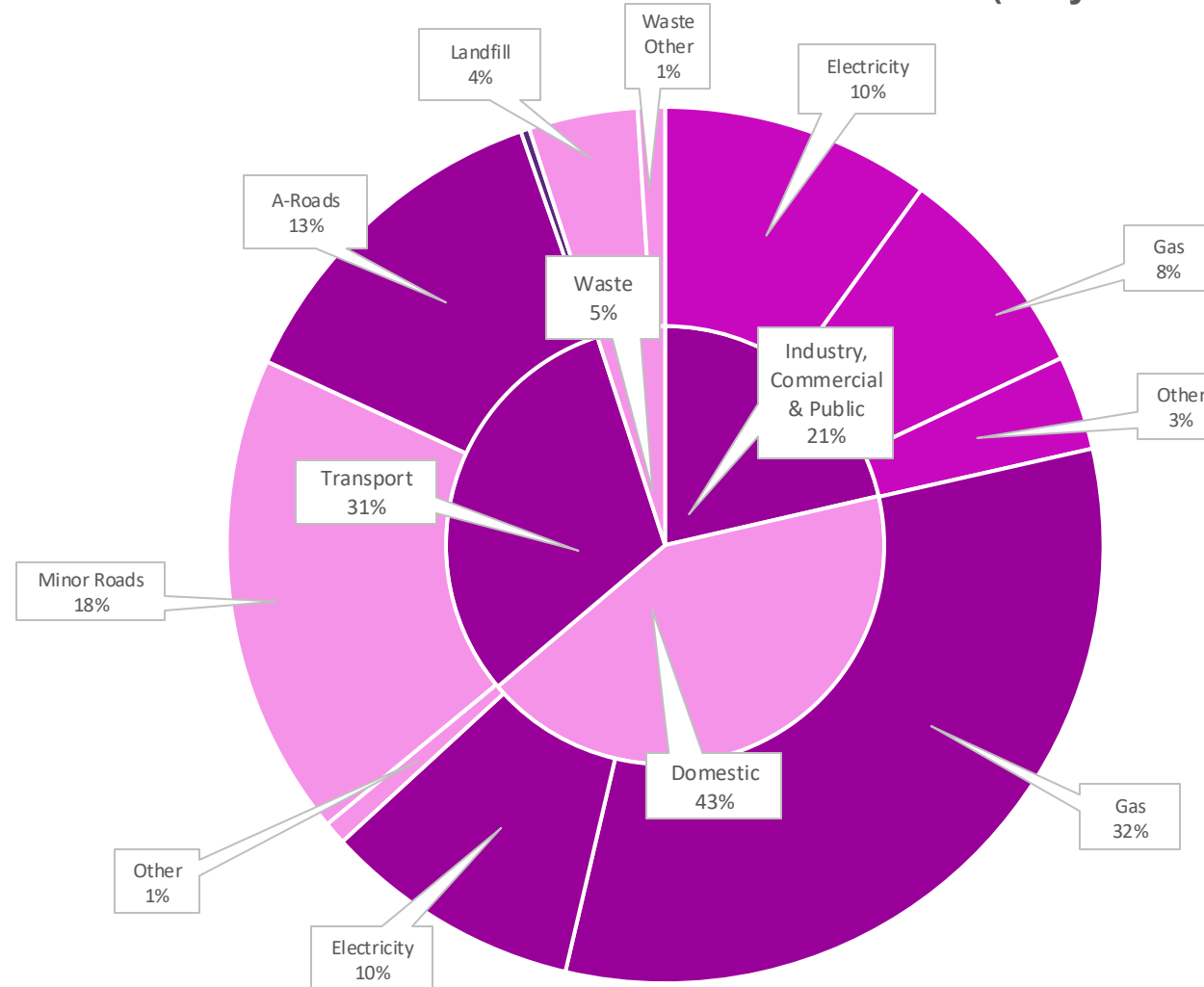
According to the UK local authority greenhouse gas emissions statistics published by the Department for Energy Security and Net Zero, Croydon's emissions form part of a long-term national downward trend, driven largely by cleaner electricity generation and improved energy efficiency since 2005. At a local level, the main sources of borough-wide emissions are typically domestic gas use for heating, road transport, and emissions from commercial and industrial buildings, reflecting Croydon's urban character. These statistics measure "territorial" emissions, meaning emissions are allocated to where energy is used rather than where it is generated, and exclude aviation and shipping.

Total Carbon Emissions for the Croydon Borough per Calendar Year (kt CO₂e)



The graph above shows Croydon's borough wide total emissions across various sectors such as Industry, Commercial, Public Sector, Domestic & Transport etc. Since 2018, there has been a 19% decrease in emissions and the average emissions equates to 1,139 (ktCO₂e).

How Carbon Dioxide was Produced in 2023 Carbon Emissions (Croydon Borough)



The graph above shows the breakdown of the carbon dioxide emissions across these various sectors (such as Industry, Commercial, Public Sector, Domestic & Transport etc) and shows that the biggest contributor in the borough was from the domestic sector.

Croydon Council Emissions

Greenhouse gas emissions from Croydon Council arise from the day-to-day activities required to deliver services and operate buildings and infrastructure across the borough. These emissions are mainly associated with the production and use of energy, particularly the burning of fossil fuels for heating and transport (Scope 1 emissions) and the generation of electricity consumed in Council-owned and operated buildings (Scope 2 emissions).

Vehicle fleets, gas-heated properties, and energy-intensive facilities contribute directly to carbon dioxide emissions, whilst emissions linked to electricity use occur indirectly at power generation sites.

We are expanding our carbon reporting to include Scope 3 emissions, beginning with supply chain emissions. Scope 3 emissions represent the indirect greenhouse gas emissions that occur across an organisation's value chain, but are not produced directly by our operations or from the energy we purchase. These emissions typically account for the largest share of an organisation's overall carbon footprint. As a first step, we are focusing on supply chain emissions, which include the carbon impacts associated with the production, transport, and delivery of the goods and services we purchase.

By improving our understanding of these emissions, we can work more effectively with suppliers to reduce carbon impacts, embed sustainability into procurement decisions, and support progress toward our wider net zero and climate commitments.

Emissions Data for FY 2019-20 to FY 2024-25

Emissions Data per Financial Year (tCO2e)							
Scope	Emissions Type	2019/20	2020/21	2021/22	2022/23	2023/24	2024/25
Scope 1	Heating	7,843	4,320	5,701	6,586	5,148	5,623
	Fugitive Emissions	0	35.75	0	0	17.875	0
	Authority's Fleet	1,013	452	420	459	440	467
Scope 2	Electricity	6,605	7,183	6,538	4,741	5,951	5,464
Total Emissions		15,461	11,991	12,658	11,787	11,557	11,554

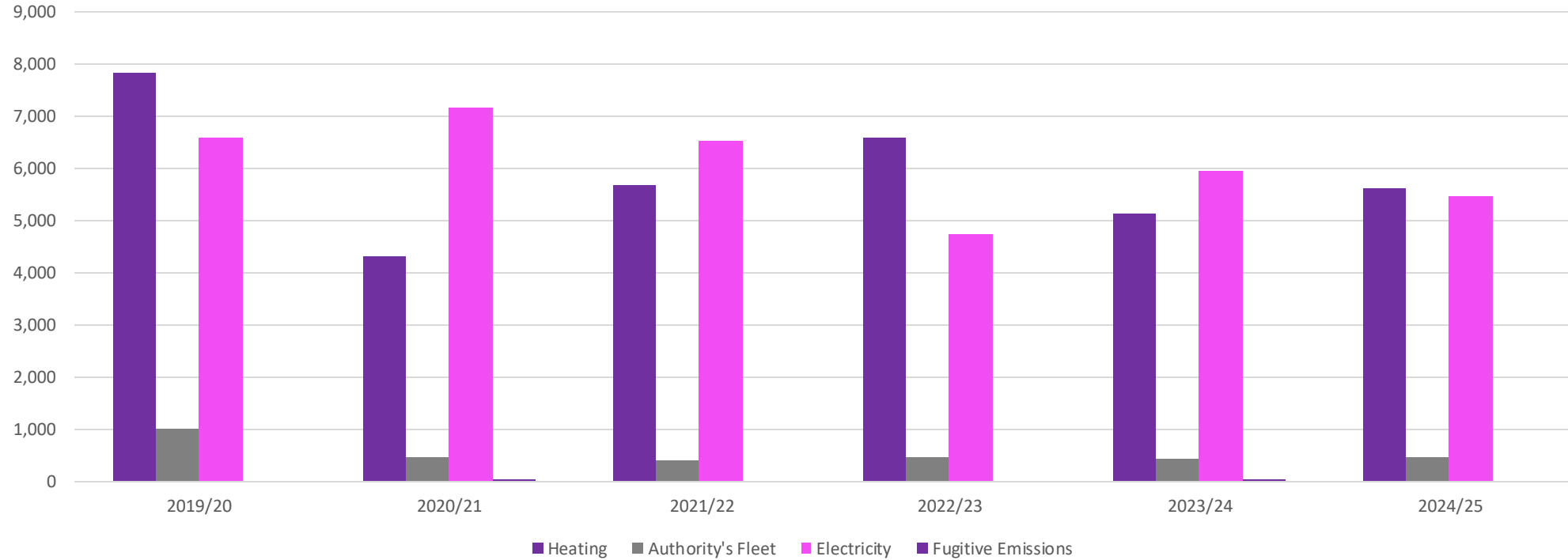
*2019/20 - This is the Council's baseline figure

*Some Authority Fleet emissions data are based on averages and/or assumptions

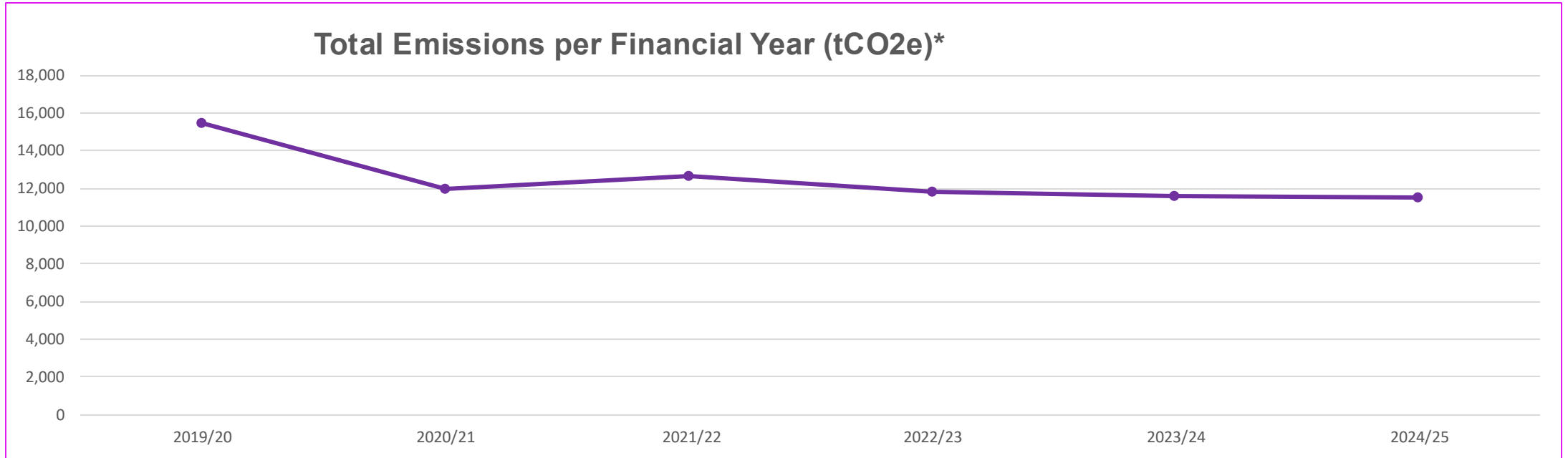
*Fugitive Emissions - gases or vapours that are released from pressurised equipment due to leaks, evaporation, or other unintended or irregular releases

Emissions Data for FY 2019-20 to FY 2024-25

Emissions Data per Financial Year (tCO2e)



Emissions Data for FY 2019-20 to FY 2024-25



The graph above shows Croydon Council's total emissions produced from scope 1 and scope 2 emissions. Since 2019/20, there has been a 25.27% decrease in emissions and the average emissions equates to 12,501 (tCO2e).

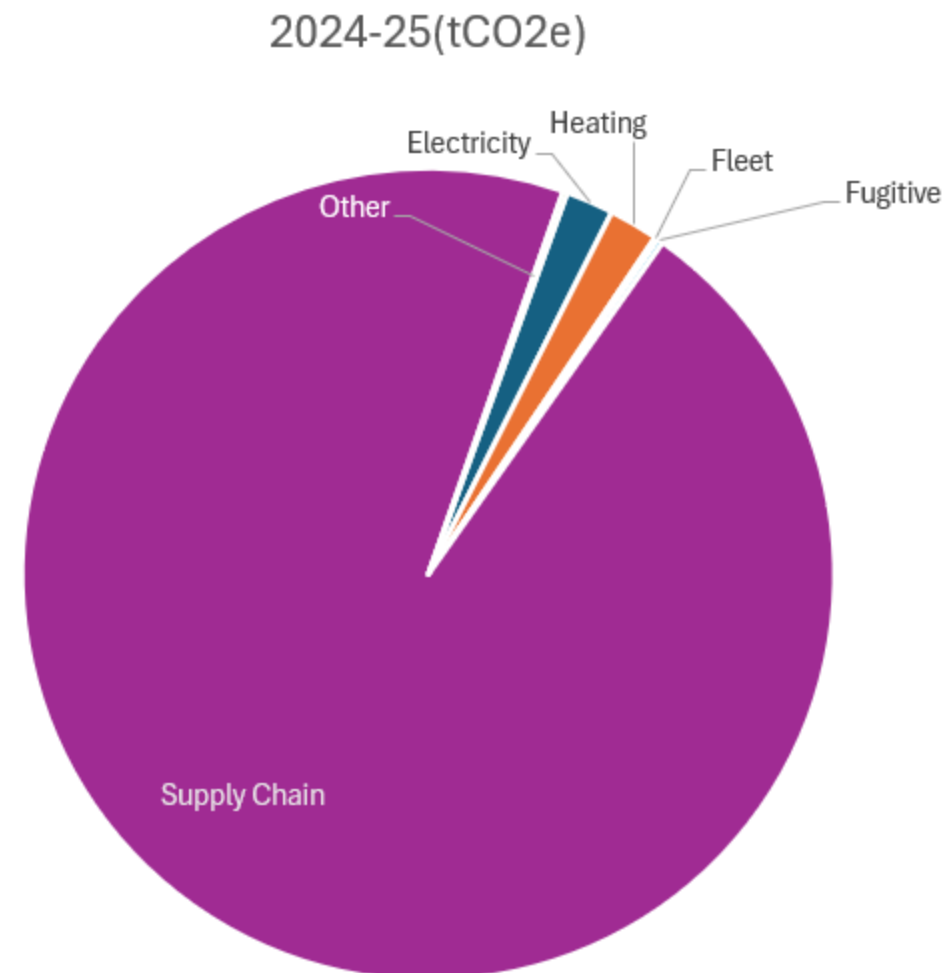
*tCO2e stands for Tonnes of Carbon Dioxide Equivalent

Supply Chain Emissions – Scope 3

Scope 3 emissions accounted for the vast majority of the Council’s carbon footprint, driven primarily by supply chain activity. Assessing these identifies key hotspots, enabling targeted reduction through procurement, supplier engagement and contract design.

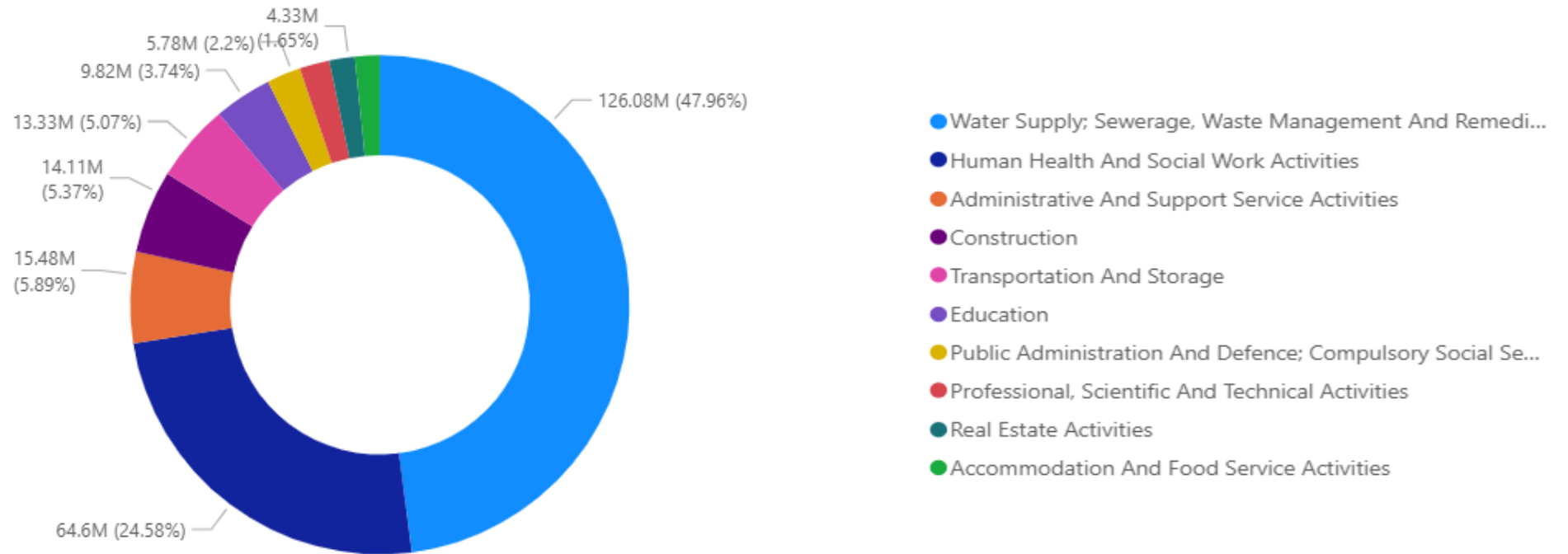
Focusing on supply chain emissions provides a clear baseline, making reporting a practical first step towards effective carbon reduction.

Category	2023-24(tCO2e)	2024-25(tCO2e)
Electricity	5,951.41	5,464.07
Heating	5,147.72	5,623.78
Fleet	440.29	466.86
Fugitive	629.20	629.20
Supply Chain	273,877.23	273,915.08
Other	514.89	482.94



Supply Chain Emissions (Category 1: Purchased Goods & Services)

Emissions associated with water supply, sewerage, waste management and remediation activities remained the largest contributor followed by human health and social work activities.



FY2024-25 SIC Emission Category 1

Progress Update on Climate Action Plan

Getting the Groundwork Right :

During 2025–26, Croydon Council strengthened the basic systems and processes needed to deliver the Climate Action Plan. An internal Climate governance board has been established to provide clear leadership, oversight and accountability, whilst an external Climate Action Forum has been set up to enable external input, share progress, and enhance transparency across the borough.

Emissions data baselines are now established and reported annually, with continued reporting of [Scope 1 and Scope 2 emissions](#) and, this year, an expansion to include Scope 3 emissions starting with supply chain emissions.

To support future climate action, the Council has completed a climate risk assessment and is now developing a Local Area Energy Plan to provide strong evidence for long-term decisions.



Procurement



The Council has commenced reviewing procurement contracts to consider and include net zero commitments. From 2026–27, pre-tender governance reports for contracts over £171,300 must evidence alignment with Croydon Council’s environmental objectives, including carbon reduction and waste minimisation.



This is the first time such requirements are being made, to ensure that future contracts demonstrate clear sustainability and climate outcomes.

Pensions

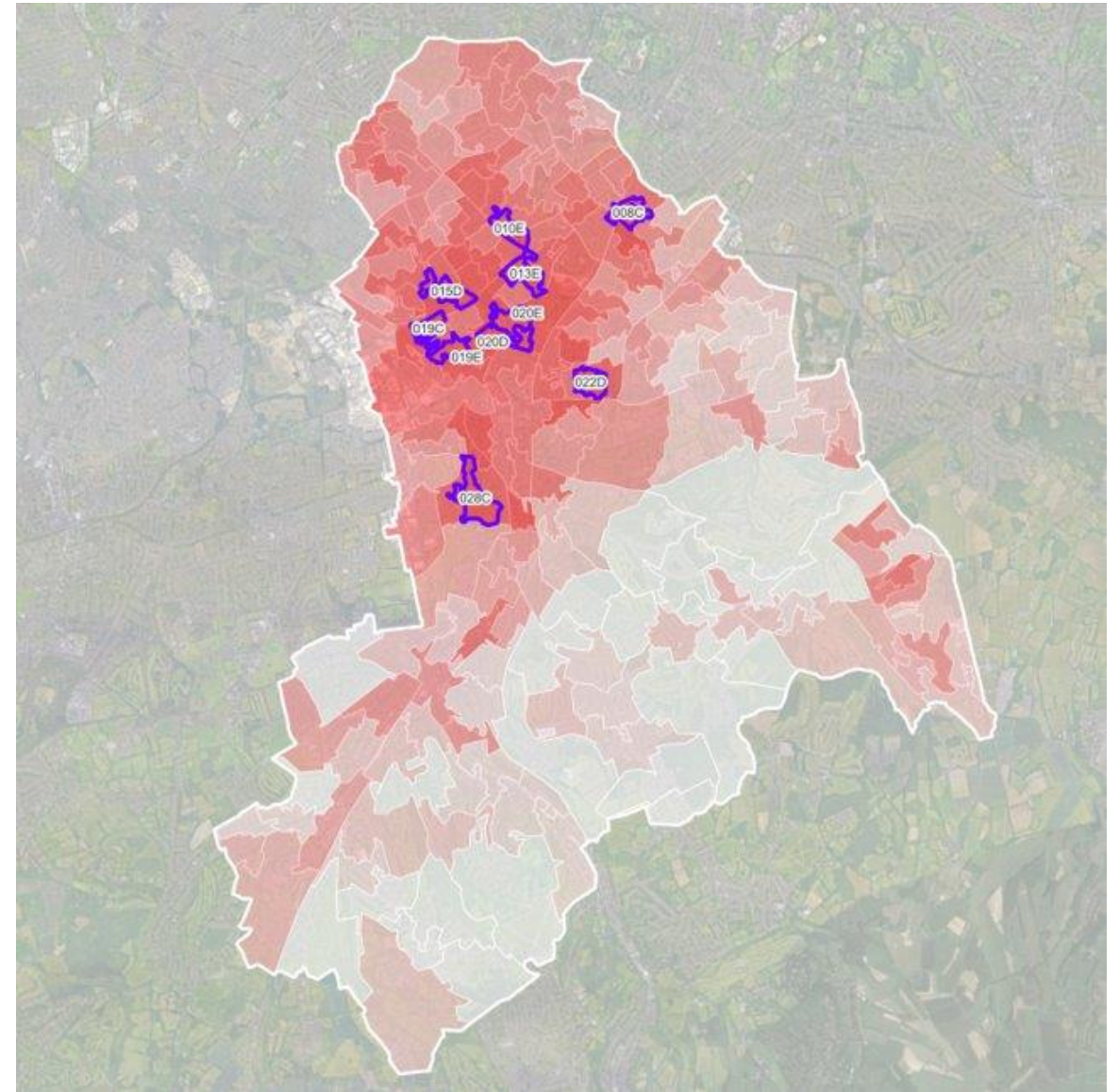
Fund manager	December 2024 £m	December 2025 £m
Temporis- renewable energy	77.9	79.1
Macquarie – wind farms	18.3	17.2
Total	96.2	96.3
Fund total	1,963.4	2,166.5
% renewable energy of Fund total	4.9%	4.4%

- In March 2026 the Pension Committee adopted an updated Responsible Investment Policy specifically recognising climate change as financially material to the Fund, both in terms of opportunities and risks. The Fund has undertaken climate change scenario analysis as part of its three-year formal review in order to understand the climate impact on the Fund across different warming scenarios.
- The whole of the Council’s Pension Fund investments will be transferred to the management of the London Collective Investment Vehicle (LCIV) during the course of 2026-27. The London wide organisation which manages the Fund’s investments has committed to become a net zero entity by 2040 in line with the Paris Agreement objectives to limit global temperature rise below 1.5°C. In the Fund’s current portfolio there is an allocation to renewable investments in the UK and Ireland. The Fund has not set an explicit Fund level Net Zero target, but it supports the objectives of the Paris Agreement and sees these as entirely consistent with its fiduciary duty. Over recent months the Fund’s Committee, Board and officers have received relevant presentations and training.
- The table gives you the comparative figures for December 2024 and December 2025 for the two fund managers through which we invest specifically in renewable energy.

Climate Risk Assessment

A climate risk assessment was undertaken with a locational approach to strengthening Croydon's climate adaptation evidence base, focusing on flooding, extreme heat and air pollution as the borough's most urgent risks. Drawing on GLA and local data, the analysis identifies priority neighbourhoods where risks overlap and where targeted action would deliver the greatest health, social and economic benefits.

Croydon 010E	Thornton Heath
Croydon 013E	Selhurst
Croydon 019C	Broad Green
Croydon 020D	Selhurst
Croydon 015D	West Thornton
Croydon 020E	Selhurst
Croydon 008C	South Norwood
Croydon 028C	Waddon
Croydon 019E	Broad Green
Croydon 022D	Addiscombe



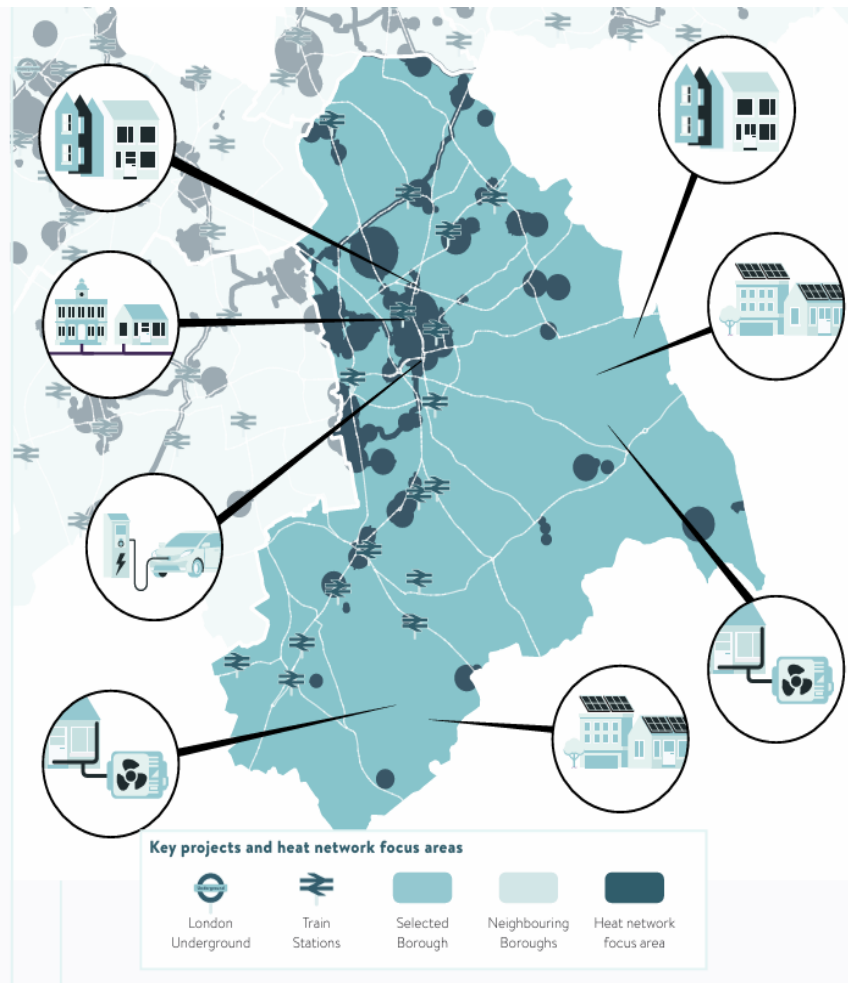
Local Area Energy Plan

CROYDON

Decarbonisation Pathway

This page provides a summary of the technologies chosen for the Net Zero 2040 scenario and recommendations. Key projects and recommendations are subject to the information available at the subregional level. Expected to be further evaluated and refined through Phase 2 LAEP and/or future feasibility stages.

Fabric retrofit (all domestic) 60% of total properties having some retrofit. Flats are the most common buildings flagged for fabric improvement - with 38,700 properties out of the 96,700 total retrofits being flats.	Energy Saving (GWh per year) 78	Carbon Saving (tCO2e for year 2040) 18,200	Investment (GBP) 551m
Fabric retrofit (social domestic) For social housing 54% of properties are flagged for needing some retrofit - with 9,300 being flats and 4,000 houses.	Energy Saving (GWh per year) 5	Carbon Saving (tCO2e for year 2040) 1,200	Investment (GBP) 20m
Heat network and communal Heat networks and communal systems are key - with 19,700 and 12,600 properties connecting respectively.	Heat Provided (GWh per year) 504	Carbon Saving (tCO2e for year 2040) 83,700	Investment (GBP) 375m
Heat pump Heat pumps focus in less heat dense areas, with 126,300 property level.	Heat Provided (GWh per year) 1,400	Carbon Saving (tCO2e for year 2040) 304,700	Investment (GBP) 1,207m
Rooftop PV There is 643 MW of rooftop PV potential of this 260 MW is deployed in the scenario.	Electricity Generated (GWh per year) 239	Carbon Saving (tCO2e for year 2040) 3,800	Investment (GBP) 459m
EV charging 47,400 domestic properties have access to off street charging. 6,700 onstreet onstreet chargers are required.	Capacity (MW per year) 647	Carbon Saving (tCO2e for year 2040) 166,000	Investment (GBP) 108m



A Local Area Energy Plan is a data-driven roadmap that identifies the most effective, low-carbon energy solutions tailored to a specific area's needs and future growth and critically it identifies the 'what, where (and how many) and when' to achieve a decarbonised borough

Phase 1 was completed by the Greater London Authority, and Phase 2 is now being delivered by the Council and is due to conclude by the end of this year, with the aim of developing a borough-wide decarbonisation plan.

Climate Literacy



- ❑ The Council introduced Climate Fresk as a way to improve carbon literacy in the Council. It is a collaborative, science-based workshop using cards based on IPCC (Inter Governmental Panel on Climate Change) reports to build understanding of the causes, processes, and impacts of climate change.
- ❑ An adaptation-focused workshop that helps participants assess climate risks and vulnerabilities, and identify practical adaptation actions for organisations, communities, or places.
- ❑ In 2025-26, 45 staff and Councillors attended a Climate Fresk workshop, and we had 17 staff members attend a climate adaptation workshop.
- ❑ To date, 52 people have been trained in Fresk and 26 people have been trained in adaptation and there will be further regular sessions in Fresk at the Council.

London Food Purchase Commitment

Bronze

Engage and identify

1. Engage all relevant colleagues and teams.
2. Identify and prioritise food procurement contracts.
3. Start to act on priority contracts and report any activity that supports targets.

Silver

Measure and share

1. Gather the data from suppliers. This needs to be either 80% of direct food purchasing contracts or top 5 contracts.
2. Report your annual food purchasing/waste and provenance data
3. Engage, agree and share actions to be taken by food suppliers.

Gold

Action and influence

1. Report annual data, illustrating progress made against your baselines and the targets.
2. Implement the changes made by suppliers to food purchasing contracts.
3. Take steps to influence public institutions outside of direct control in your borough.

Croydon has signed up to the Bronze level of the London Food Purchase Commitment. The initial assessment indicated that there are currently no food contracts in place, and the Council is exploring opportunities to embed sustainable food practices going forward.



Progress Update on Climate Action Plan - Driving a green recovery

Croydon Council is driving a green recovery by working with businesses, residents and partners to support job creation, cut emissions and strengthen the local circular economy.

On 30 September 2025, Croydon Council held an Employment and Skills Roundable that brought partners, employers, and providers together to discuss local skills gaps, particularly those linked to digital skills and the growing green economy. The session strengthened collaboration and highlighted where shortages in green skills are already affecting the borough.



Circular Economy: We have continued the community reuse shops and recycling events. All households can recycle their food waste through a separate collection service. We are continuing to promote this service in harder-to-reach locations such as flats above shops, communal areas and housing estates. Reducing food waste also remains a priority, supported by the Council's ongoing campaigns.

We have maintained recycling across the Borough and our current recycling rate is 38%.



Progress Update on Climate Action Plan – Greening our Neighbourhoods

During 2025–26, Croydon Council completed a range of actions to reduce emissions and enhance neighbourhood environments. Progress was made in improving the energy efficiency of homes and council assets, alongside the delivery of measures to cut carbon emissions across public infrastructure.

Sustainable travel initiatives were implemented to support walking, cycling and low-emission transport, complemented by further investment in electric vehicle charging infrastructure.

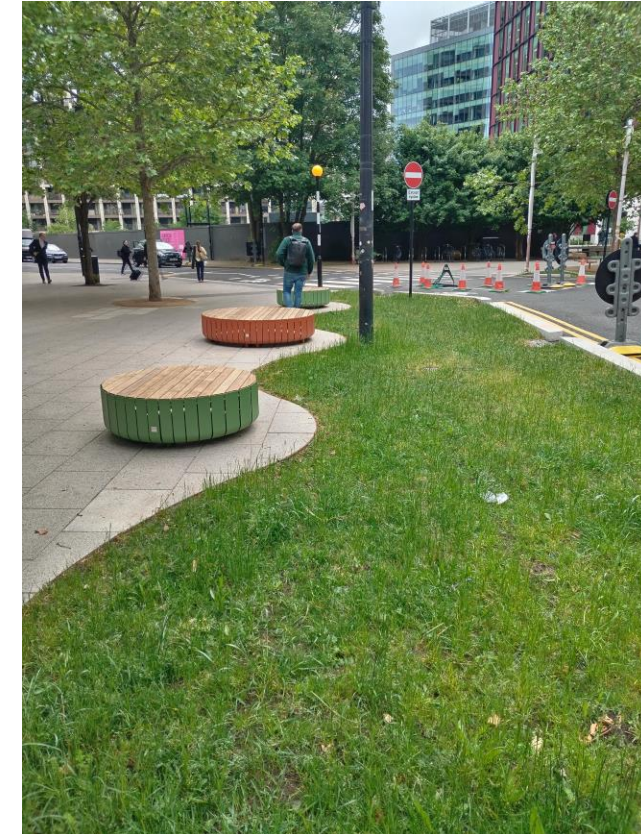
The Council also delivered nature-based and climate resilience measures, including tree planting, green infrastructure and sustainable drainage improvements. In parallel, steps were taken to reduce emissions from estate and grounds maintenance through the introduction of lower-carbon equipment and more efficient waste management practices. Together, these completed actions are contributing to greener, healthier and more resilient neighbourhoods across the borough.



Greening our Neighbourhoods Continued...

Through the town centre delivery projects (Wellesley Road, Dingwall Road, North End, Minster Green), collectively 29 new and mature trees were planted, with around 900m² of wildflower and circa 200m² of nature-based SuDS. Over the next year there will be a further 46 mature trees, over a 1000m² of wildflower planting and 200m² of planted SuDS, upon completion of Minster Green and commencement of College Green in the next financial year.

This new green infrastructure will help to reduce urban heating through wide tree canopies, mitigate flash flooding risk, improve water quality, and provide ecological enhancements in central Croydon.



Croydon Healthy Homes

The Croydon Healthy Home Service (CHH) supports vulnerable homeowners and renters to improve the energy efficiency of their homes and reduce fuel bills by helping them access grants and support through government schemes, providing end-to-end assistance from application through to post-installation home visits. Delivered in-house since November 2020, the service offers a flexible, personalised approach that adapts to changing grant availability and simplifies access to complex funding.

- 2020-2026 £4.018m of grant measures accessed
- Average of £0.73m of measures each year
- 2025-26 **£0.262m – figure lower than average owing to limited grant availability**
- Government Warm Homes Plan 26/27 – grant available up to **£1BN** nationally
- Energy advice outreach events talks and drop ins 2025/26 – **242 across the borough reaching 2,090 residents**

Strategic Transport



Active Travel Progress

Significant progress has been made in 2025–26 to support active travel, improve transport safety, and encourage modal shift in the borough. Investment in cycling infrastructure and training has strengthened access and safety, with 14 cycle hangars installed and cycle training delivered to 960 children and 360 adults, supporting long-term behaviour change and confidence in cycling.

Early activation works have progressed in North End to enhance public realm and green spaces and increase pedestrian volumes. In parallel, works at Addington Village Interchange are underway as part of bus priority improvements, aimed at reducing journey times, making bus travel more attractive, and encouraging a shift from car to bus use. Further bus priority opportunities are being explored through the Local Implementation Plan (LIP), subject to future LIP funding allocations. In relation to rail and tram networks, feasibility funding has been secured to support station upgrade proposals to improve capacity, reliability and accessibility.

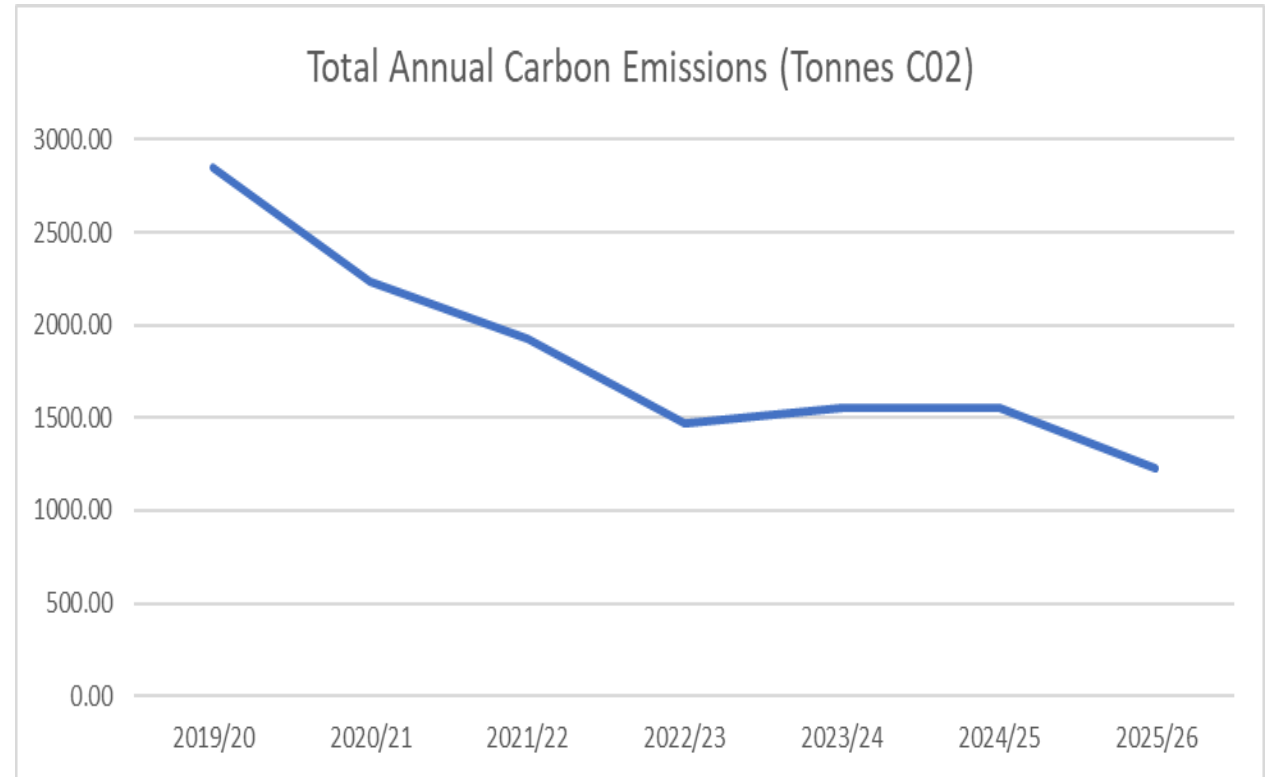
The rollout of electric vehicle (EV) infrastructure continues to support carbon reduction objectives, with steady installation of EV charging bays across the borough – 34 bays installed in 2025/26. LEVI funding has been secured to enable scaled delivery in future years. An Electric Vehicle Charging Point Strategy is scheduled for adoption by summer 2026/27, with the LEVI-funded charging programme to be rolled out thereafter, providing a coordinated and equitable approach to EV infrastructure delivery.

Street Lighting

The Council has actively pursued opportunities to accelerate the implementation of enhanced dimming across the borough to deliver additional energy and cost savings.

Through continued efforts, the Council has achieved the lowest recorded carbon emissions from Croydon's streetlighting network to date. Since 2019/20, we have reduced our total annual carbon emissions by 56.97% which means we have cut emissions from 2,853.34 tonnes of CO₂ down to 1,227.72 tonnes shown in the graph.

An action for 2026/27 was for the Street Lighting service to make further carbon reduction through variant lighting level across the borough by dimming 50% on both residential and main roads. This action has been completed ahead of schedule.



Climate Adaptation for Flooding

- ❑ The SuDS in school project is an initiative backed by the Department for Education which aims to reduce the flood risk profile across the school estate.
- ❑ Croydon Council received up to £75k of funding per phase from the DfE to implement SuDS in schools across the borough for two project phases.
- ❑ During Phase 1, SuDS and drainage features were installed in three schools across the borough and during Phase 2 of the project, a total of 34 planters were installed across 5 schools (pics shown). Phase 2 wrapped up in February 2026 where significant positive feedback was received from staff across each school.
- ❑ The St. Andrews Road Project is a Greater London Authority (GLA) initiative testing the 'dig-once' approach. The approach looks to leverage planned utility works as a mechanism to enable more efficient installation of SuDS features on roads. This collaborative pilot scheme was carried out by the contractors JDT and SGN alongside the Councils Highways Team, Arcadis and Thames Water.
- ❑ Two rain gardens were successfully installed on St. Andrews Road in December 2025 with the intention of reducing surface water flooding.



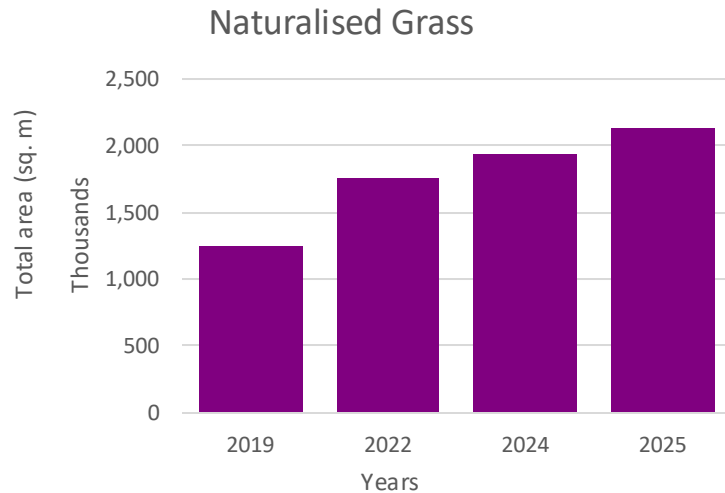
Tree Planting

- ❑ Since January 2025, 7 standard trees and 5950 saplings were planted which is the continuation of the Trees for Cities programme in Ashburton Playing Fields. 16 Trees in and around Rockmount Primary School and 12 trees in Downsview Primary school were planted in collaboration with Street Trees for Living.
- ❑ In 2025, 74 street trees were planted across the borough with a further 7 Celebration Trees in Grange Park, Park Hill Park & Bradmore Green Park, as part of the Trees for Streets Programme. Another 61 trees were planted in Broad Green, New Addington, West Hill, Croham Valley and the Ruffetts using Section 106 monies.
- ❑ In 2026 we planted 15 Trees in two schools Gonville Academy & West Thornton Primary as part of the Street Trees for Living Programme. We also planted 32 street trees across the borough and 6 Celebration trees in Grange Park, Millers Pond, Addiscombe Recreation Ground, Westow Park, Haling Grove and Woodcote Village Green.



Biodiversity

In 2025/26, the Council has delivered a further 10% increase in naturalised grass areas. Naturalised grass refers to areas of wild grassland that are cut only once a year, rather than being regularly mown like traditional amenity grass. This additional increase builds on earlier changes and brings the total expansion of naturalised grass to 20% since 2022. The shift reflects a deliberate move away from regularly managed grass towards more natural landscaping approaches. Increasing naturalised grass supports a range of environmental objectives, including improving biodiversity, providing habitats for pollinators and wildlife, enhancing soil health, and increasing climate resilience. It also contributes to more sustainable land management by reducing the need for frequent mowing and thereby lowering fuel use.



Increasing the area of naturalised grass in Lloyd Park

Green Flags – Parks in Croydon

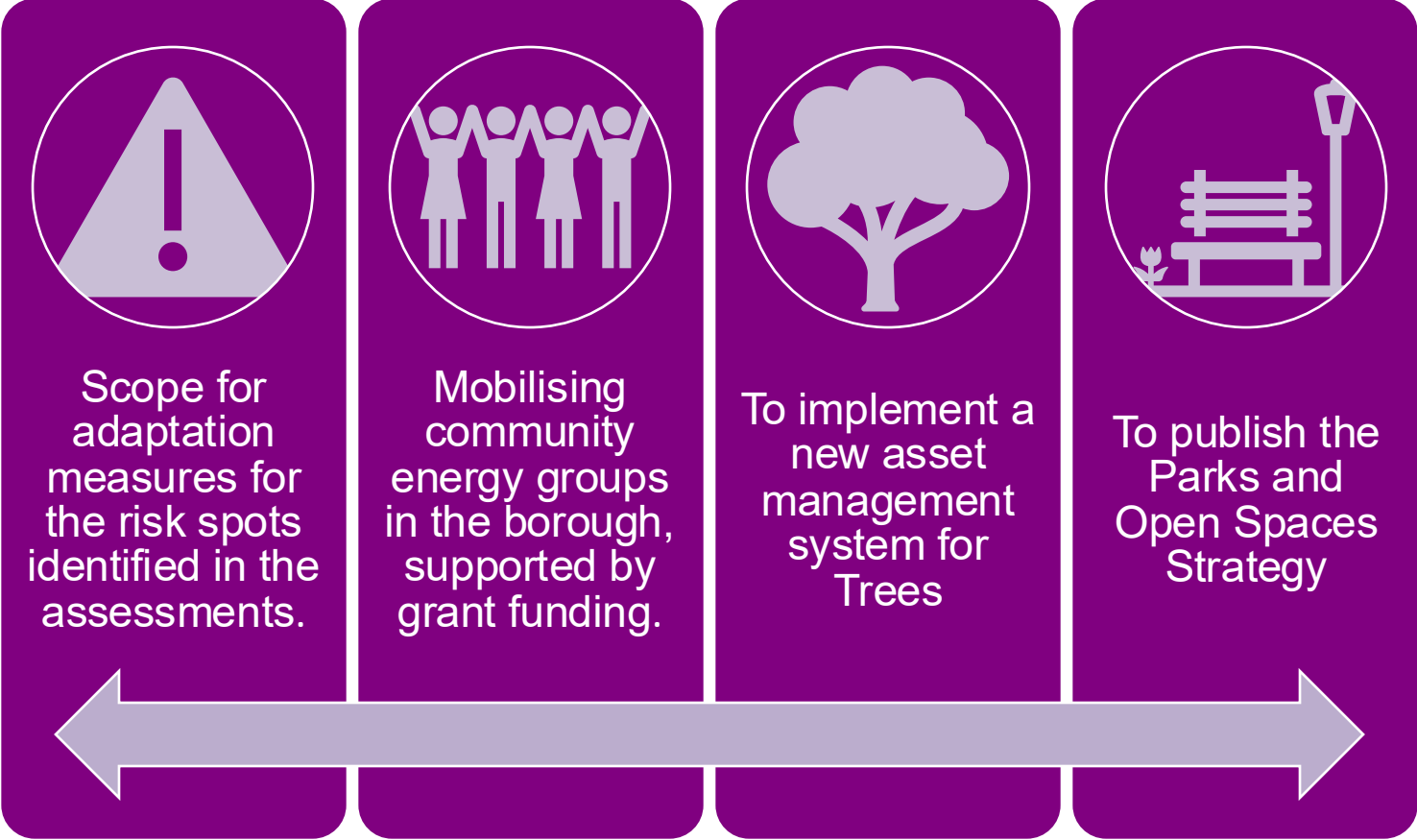
In 2025/26, the Council was awarded four Green Flags. To earn the award, sites must demonstrate high standards of cleanliness, maintenance, safety, and security, whilst being welcoming and involving the community. The criteria also focus on environmental sustainability, conservation and strategic management.

The parks that were awarded a Green Flag were:

- Coulsdon Memorial Ground;
- Happy Valley;
- Wandle Park and
- Wettern Tree Garden.



Revision to the Climate Action Plan

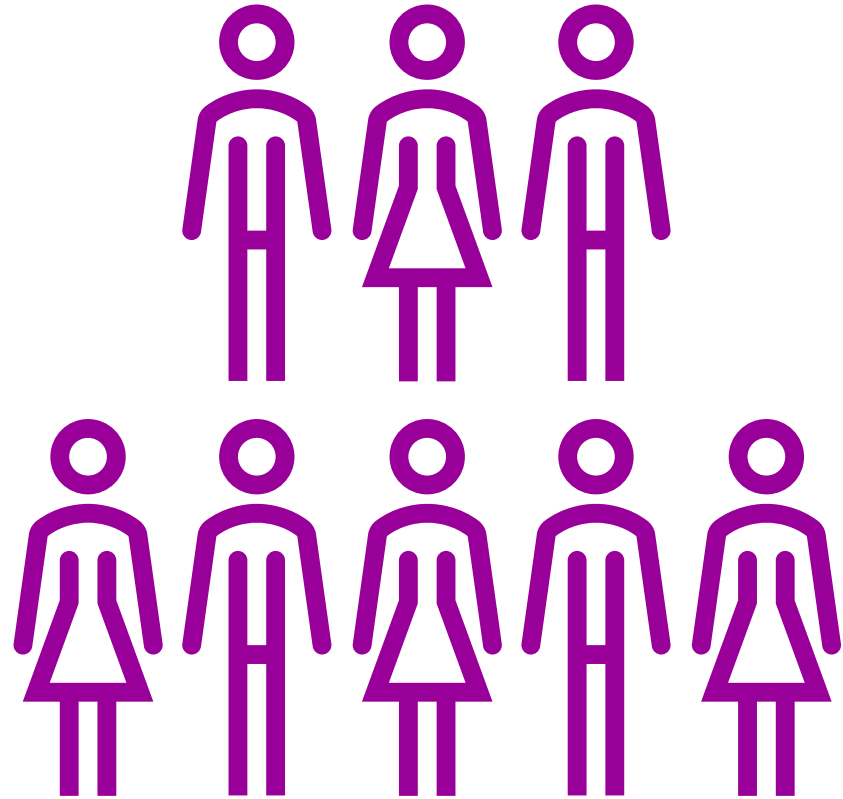


Community in Climate Action

Climate Action Forum

In 2025/26, the Council established the Climate Action Forum (CAF), a borough-wide partnership forum that brings together the Council and external partners to support delivery of the Climate Action Plan. It provides a space for sharing ideas, expertise and challenge, whilst improving transparency and accountability on climate progress. The Forum also enables the Council to update partners, gather external input and encourage collaborative action on carbon reduction and climate resilience.

The Climate Action Forum meets bi-monthly, with two sessions held in person each year and the remaining meetings held online. Meeting minutes are [published online](#), alongside regular updates about the Forum and information on how to get involved.



Climate Action in Community

Communities play a crucial role in tackling climate change, as local action can lead to meaningful and lasting impact. By sharing knowledge, supporting one another and taking collective responsibility, communities can reduce emissions, improve resilience and protect local environments. Community-led action also helps build stronger connections, encourages behaviour change and ensures climate solutions reflect local needs and priorities.



200kgs of waste avoided through repair parties held by Sustainable Thornton Heath

[Sustainable Thornton Heath](#) is a small community group that runs a monthly repair café to help keep electrical items out of landfill, alongside a bi-monthly Eco Living Fest offering activities like clothes mending, cycle repairs, food growing support, swaps, refills and sustainable living advice.



Laurier Road, Addiscombe

Green Streets, which support residents to remove pesticide use from their streets and replace it with planting that encourages wildflowers and local stewardship. Visit [Croydon Climate Action](#) for more information.

Climate Action in Community – Community Energy

Croydon Community Energy is delivering community-owned solar projects on local buildings, including a 96.3 kWp installation at Archbishop Tenison’s School, helping to cut carbon emissions and reduce energy costs. At Good Food Matters, the organisation has installed rooftop solar panels that support the site’s sustainability goals whilst generating savings on energy bills and reinvesting value back into the community and contributing to Croydon’s transition to a low-carbon economy.



Climate Action in Community – Skill Sharing



Croydon's Men's Shed offers a welcoming space for people to support their mental health whilst learning skills such as gardening, food growing, and woodwork. Based at Good Food Matters in New Addington, it is open to men aged 18+ for weekly activities and shared meals every Friday, 11am–3pm. There is also a Men's Shed in (St Francis Church, Selston / Monks Hill). Sessions are open to new members, and no advance booking is required. Check details on [Mental Health Croydon](#).

Croydon Climate Craft Club moves between various venues across Croydon, offering a different activity each time. It is a free, community-led space that brings people together through sustainable crafts and climate action. Participants can connect, exchange skills, and learn from one another whilst creating environmentally friendly projects.

Climate Action in Schools

Climate action in schools is a central part of the Department for Education's Sustainability and Climate Change Strategy, which aims to make the education sector world-leading in sustainability by 2030. The strategy encourages schools to take a whole-school approach that combines climate education, decarbonisation of school estates, nature and biodiversity improvements, and preparation for climate risks. Let's Go Zero and the Climate Ambassadors programme are supporting schools to develop climate action plans. The climate team presents regularly at the School Business Forum to encourage schools to develop their own climate action plans.

Schools are also participating in TfL Stars for live programme to encourage sustainable travel.



Downsview Primary Schools was awarded a Plastic Free School status in July 2025

Climate Action in Schools

Several schools have now completed a Climate Action Plan, with further schools expressing interest in developing one. Schools seeking support to develop a Climate Action Plan can contact the Council for assistance. Individuals interested in supporting schools can join the Climate Ambassadors Programme; for more information, please contact climateaction@croydon.gov.uk

**Downsview
Primary and
Nursery School**

**Greenvale
Primary School**

**St Peters Primary
School**

**St. Johns Primary
School**

**All Saints C of E
Primary School**

**St Thomas
Becket Catholic
Primary School**

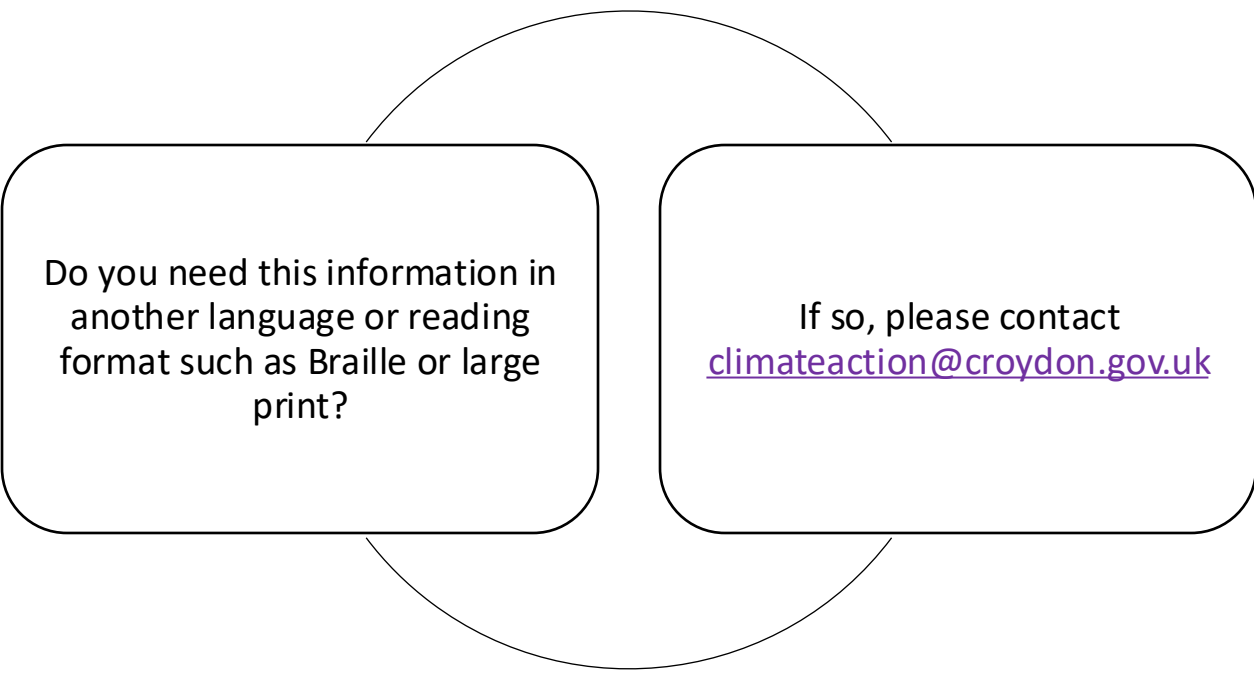
**St Chad's
Catholic Primary
School**

Schools working towards sustainable travel through TfL Stars for Life

Working Towards Bronze Star	Working Towards Bronze Star	Bronze	Gold Star	Gold Star
Ark Oval Primary Academy	Orchard Way Primary School	Robert Fitzroy Academy	Beulah Infants' School	Royal Russell School
Chestnut Park Primary School	South Norwood Primary		Cypress Primary School	The Hayes Primary School
Chipstead Valley Primary School	St John's CofE Primary School	Silver Star	Downsview Primary and Nursery School	Winterbourne Junior Girls' School
Elmwood Junior School	St Peter's Primary School	None	Fairchildes Primary School	
Forest Academy	St Thomas Becket Catholic Primary School		Forestdale Primary School	
Good Shepherd Catholic Primary and Nursery School	Winterbourne Boys' Academy		Greenvale Primary School	
Monks Orchard Primary School			Howard Primary School	
Norbury Manor Primary School			Keston Primary School	
Oasis Academy Ryelands			Park Hill Junior School	



Further Contact



Do you need this information in another language or reading format such as Braille or large print?

If so, please contact
climateaction@croydon.gov.uk