

## Guidance on how to draw a basic floor plan

### What should be included?

- basic property layout including all rooms, halls, landings, stairs.
- approximate room sizes in metres squared
- position of all doors, windows, bathroom(s) and kitchen(s).
- any other significant facilities eg: Boiler, Garage, Fire escape etc.

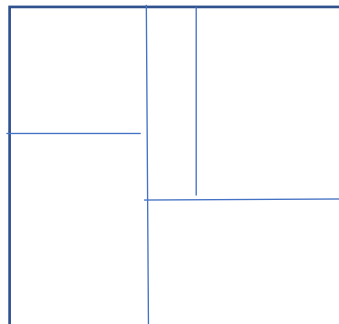
The Floorplan does **NOT** need to be to scale.

You can use plain paper, or use graph / squared paper to help make it easier.

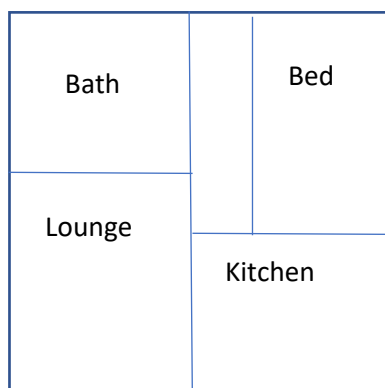
### Draw a basic outline of the building:



### Add internal walls:



### Label the Rooms:



### Add doors and windows, room sizes, etc:

