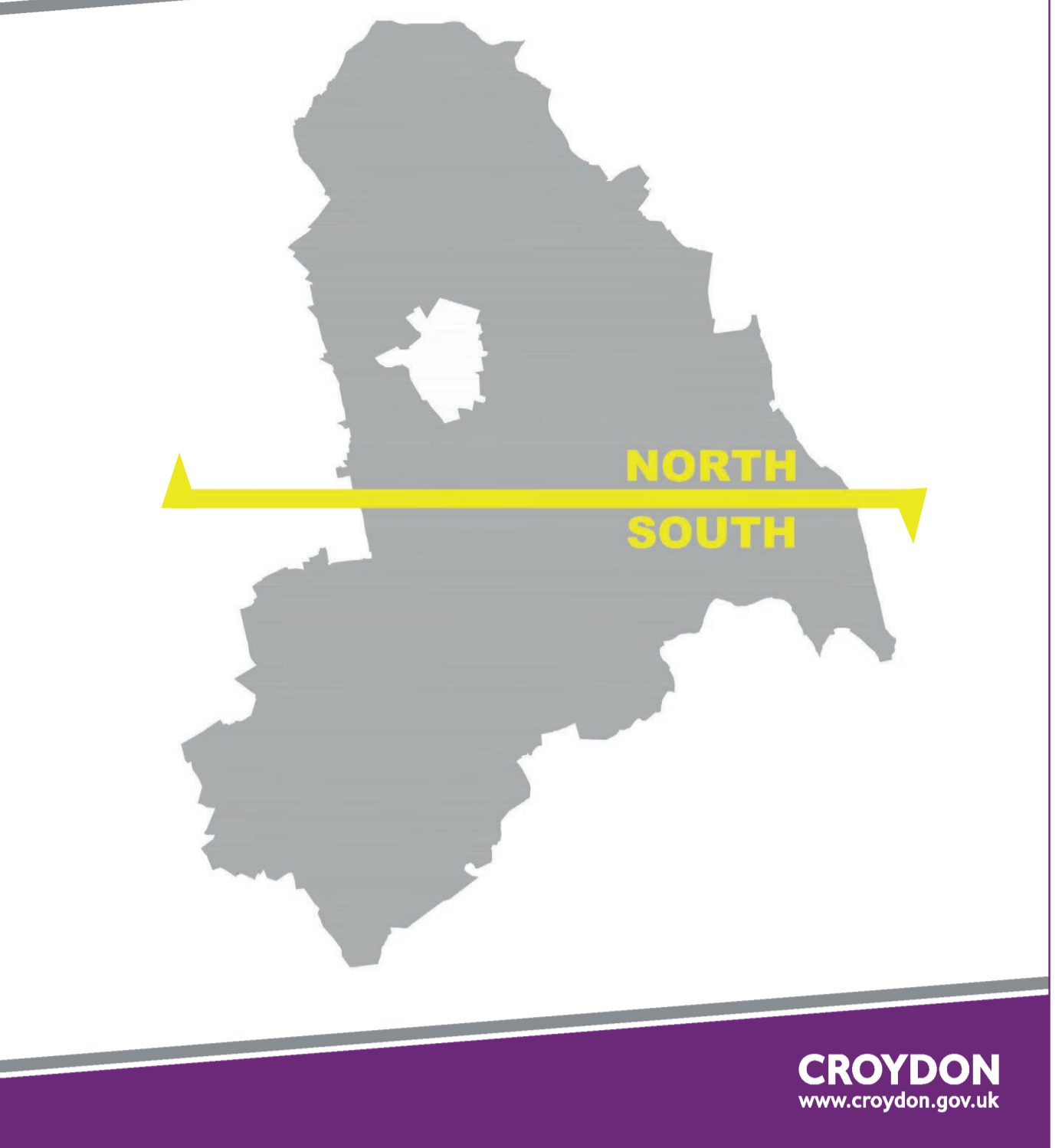


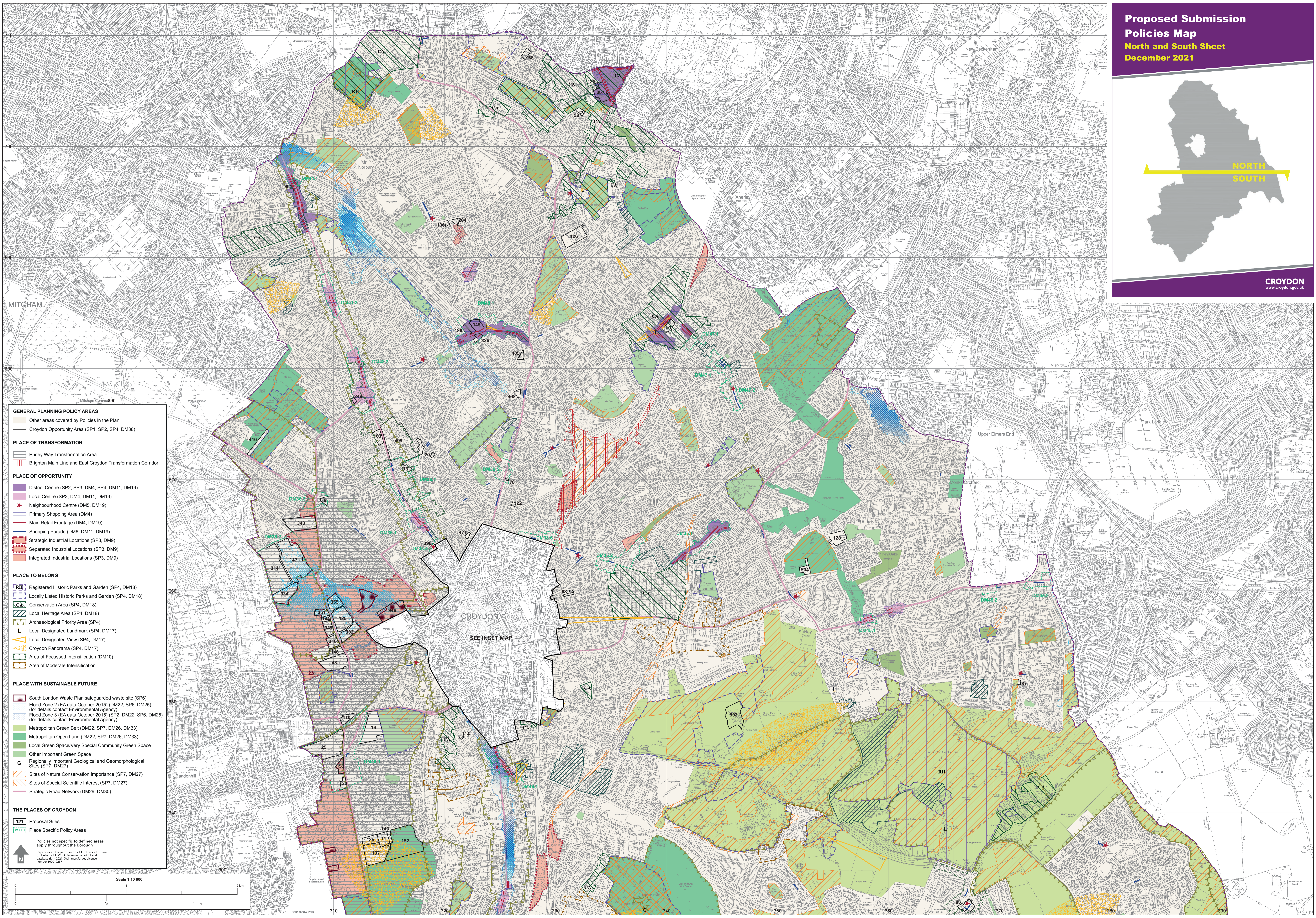
# Proposed Submission Policies Map

## North and South Sheet

December 2021



CROYDON  
www.croydon.gov.uk



- GENERAL PLANNING POLICY AREAS**
- Other areas covered by Policies in the Plan
  - Croydon Opportunity Area (SP1, SP2, SP4, DM38)
- PLACE OF TRANSFORMATION**
- Purley Way Transformation Area
  - Brighton Main Line and East Croydon Transformation Corridor
- PLACE OF OPPORTUNITY**
- District Centre (SP2, SP3, DM4, SP4, DM11, DM19)
  - Local Centre (SP3, DM4, DM11, DM19)
  - Neighbourhood Centre (DM5, DM19)
  - Primary Shopping Area (DM4)
  - Main Retail Frontage (DM4, DM19)
  - Shopping Parade (DM6, DM11, DM19)
  - Strategic Industrial Locations (SP3, DM9)
  - Separated Industrial Locations (SP3, DM9)
  - Integrated Industrial Locations (SP3, DM9)
- PLACE TO BELONG**
- Registered Historic Parks and Garden (SP4, DM18)
  - Locally Listed Historic Parks and Garden (SP4, DM18)
  - Conservation Area (SP4, DM18)
  - Local Heritage Area (SP4, DM18)
  - Archaeological Priority Area (SP4)
  - Local Designated Landmark (SP4, DM17)
  - Local Designated View (SP4, DM17)
  - Croydon Panorama (SP4, DM17)
  - Area of Focussed Intensification (DM10)
  - Area of Moderate Intensification
- PLACE WITH SUSTAINABLE FUTURE**
- South London Waste Plan safeguarded waste site (SP6)
  - Flood Zone 2 (EA data October 2015) (DM22, SP6, DM25) (for details contact Environmental Agency)
  - Flood Zone 3 (EA data October 2015) (SP2, DM22, SP6, DM25) (for details contact Environmental Agency)
  - Metropolitan Green Belt (DM22, SP7, DM26, DM33)
  - Metropolitan Open Land (DM22, SP7, DM26, DM33)
  - Local Green Space/Very Special Community Green Space
  - Other Important Green Space
  - Regionally Important Geological and Geomorphological Sites (SP7, DM27)
  - Sites of Nature Conservation Importance (SP7, DM27)
  - Sites of Special Scientific Interest (SP7, DM27)
  - Strategic Road Network (DM29, DM30)
- THE PLACES OF CROYDON**
- 121 Proposal Sites
  - Place Specific Policy Areas
- Policies not specific to defined areas apply throughout the Borough
- Reproduced by permission of Ordnance Survey on behalf of HMSSG. © Crown copyright and database right 2021. Ordnance Survey Licence number 100019227

