

# LBC management arrangements

Updated structure chart 1<sup>st</sup> November 21

N.B. posts highlighted as blue subject to separate review

Posts highlighted as yellow paid for by NHS

*Directorates*

*Chief Executive*  
**Katherine Kerswell**

*Corporate Director Resources*  
**Richard Ennis**  
*(Interim)*

*Corporate Director Children, Young People & Education*  
**Deborah Jones**  
*(Interim)*

*Corporate Director Adult Social Care & Health*  
**Annette McPartland**  
*(Acting)*

*Corporate Director Housing*  
**Alison Knight**  
*(Interim)*

*Corporate Director Sustainable Communities, Regeneration & Economic Recovery*  
**Sarah Hayward**  
*(Acting)*

*Assistant Chief Executive*  
**Elaine Jackson**  
*(Interim)*

*Executive Director Localities & Residents Pathway*  
**Hazel Simmonds**

*Assistant Chief Executive Directorate*

Assistant Chief Executive

Chief Digital Officer  
& Director of  
Resident Access

Chief People  
Officer

Director of Policy,  
Programmes &  
Performance

Director of Public  
Health

Director of Service  
Quality, Improvement  
& Inclusion

Head of Digital  
Operations

Head of Human Resources  
(Adult Social Care &  
Health)

Head of Business  
Intelligence & Performance

Public Health Teams

Head of Digital  
Services, Access &  
Reach

Head of Human Resources  
(Hsg & Sust Comms)

Head of Leader & Cabinet  
Office

Head of Resident  
Contact

Head of Human Resources  
(Resources & ACE)

Head of Mayor's Office,  
Elections,  
& Coroners Service

Head of Registrars  
& Bereavement

Head of Human Resources  
(C, YP & E)

Head of Human Resources & Finance  
Service Centre

Head of Communications & Engagement  
**Service temporarily reporting to DPP&P**

Head of Learning & Organisational  
Development  
**Service temporarily reporting**

*Resources Directorate*

Corporate Director Resources

Internal Audit

Director of Finance

Monitoring Officer

Director of Commercial Investment

Director of Legal Services

Head of Finance  
(Housing & Sustain  
Croydon)

Head of Finance  
(Adult Social Care &  
Health)

Head of Democratic  
Services & Scrutiny

Head of Estates, Asset  
Management  
& Facilities

Head of  
Social Care & Education Law

Head of Finance  
(Resources & ACE)

Head of Finance  
(C, YP & E)

Service temporarily  
reporting to MO

Head of  
Litigation & Corporate Law

Head of Finance  
(Corporate & Treasury  
Management)

Head of Payments,  
Revenues, Benefits &  
Debt

Head of Insurance Fraud &  
Risk

Head of Pensions

Head of Commercial &  
Property Law

*Adult Social Care & Health  
Directorate*

Corporate Director  
Adult Social Care & Health

Director of Adult Social  
Care Operations

Director of  
Commissioning and  
Procurement

Director of Adult  
Social Care Policy &  
Improvement

Head of Community  
Equipment Service

See final slide for HoS posts  
currently reporting under  
Director , but subject to  
restructure

Head of Business & Service  
Compliance

Head of 18-65 Disability  
Services

Head of Provider  
Services

Head of Improvement

Head of Safeguarding  
& Quality Assurance

Head of Localities

Deputy Director  
One Croydon PMO  
*(CCG paid)*

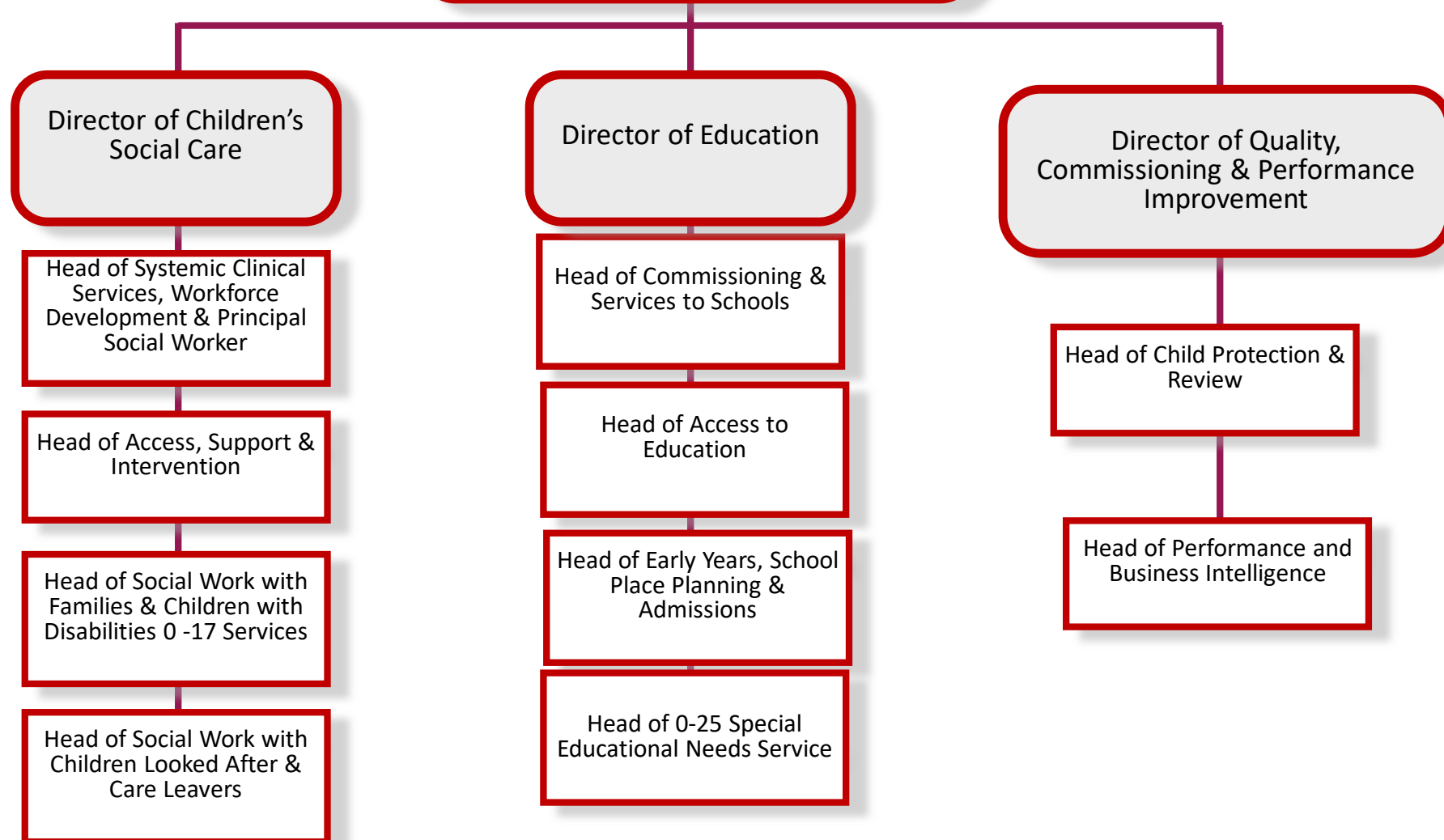
Head of Life Services  
*(CCG Paid)*

Principal Social Worker  
& Head of Adult Mental  
Health & Substance  
Misuse

Head of Integrated Contracts  
& Performance  
*(CCG Paid)*

*Children, Young People & Education Directorate*

Corporate Director  
Children, Young People & Education



*Housing Directorate*

Corporate Director  
Housing

Director of Housing -  
Estates &  
Improvement

Head of Responsive  
Repairs, Planned  
Maintenance & Safety

Head of Asset Planning &  
Capital Delivery

Head of  
Policy & Performance

Director of Housing –  
Resident Engagement  
& Allocations

Head of  
Allocations, Lettings &  
Income Collection

Head of  
Homelessness &  
Assessments

Head of Tenancy &  
Resident Engagement

*Sustainable Communities,  
Regeneration & Economic  
Recovery  
Directorate*

Corporate Director  
Sustainable Communities, Regeneration &  
Economic Recovery

Director of Planning &  
Sustainable  
Regeneration

Director of  
Culture & Community  
Safety

Director of Sustainable  
Communities

Head of Spatial Planning

Head of  
Culture, Leisure & Libraries

Head of Environment  
Services & Sustainable  
Neighbourhoods

Head of Strategic  
Transport

Head of  
Music & Arts

Head of Highways &  
Parking Services

Head of Building Control

Head of Development  
Management

Head of Environmental  
Health, Trading  
Standards & Licensing

Head of Employment,  
Skills & Economic  
Development

Head of Growth &  
Regeneration

Violence Reduction Network

Head of Independent  
Travel



*Commissioning & Procurement staffing – under separate review  
The new versions of these posts will be assimilated into the structure on the conclusion of the C&P review and restructure*

