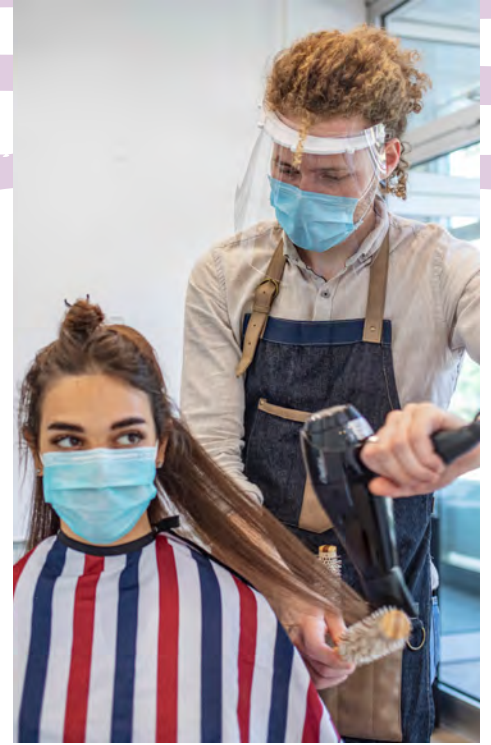


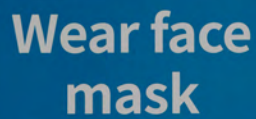
COVID-19 BUSINESS SUPPORT

SUPPORT TO HELP YOU REOPEN SAFELY

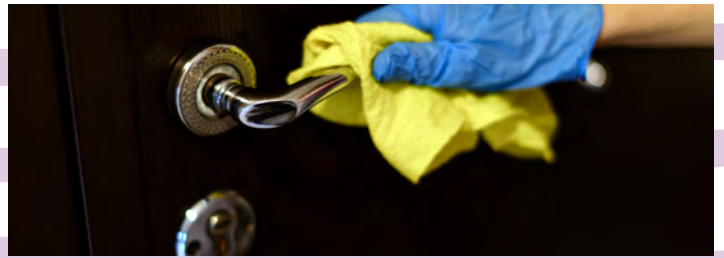


Coronavirus remains a serious threat across the country

The government has published the 'Covid-19 Response - Spring 2021', setting out the roadmap for easing lockdown restrictions in England. Find out about the law that underpins these changes and the ongoing restrictions and the restrictions that certain businesses and venues in England are required to follow.



Wear face
mask



Protect yourself, staff and customers during coronavirus

Businesses have a legal responsibility to protect employees and other people on site. Find out how to make your workplace Covid-secure.

Covid-19 risk assessment

Completing a Covid-19 risk assessment will help you understand what changes are needed for staff and customers. [Find out how to do a risk assessment.](#)

Once you have carried out a risk assessment you should share it with your staff and display the [staying Covid-secure notice](#) in your workplace to show that you have complied with the [guidance on managing the risk of coronavirus \(Covid-19\)](#).

Face coverings

Remind customers to wear face coverings in any indoor space or where required to do so by law, for instance using signage.

However, you are not responsible for enforcing customer face covering law. This is an important reminder to help reduce the spread of coronavirus. Some exemptions apply. Check when to wear one, exemptions, and how to make your own.

Social distancing

Make it easy for everyone to keep their distance by putting up signs or introducing a one way system that customers can follow.

Clean more often

Increase how often you clean surfaces, especially those that are being touched a lot. Ask your staff and your customers to use hand sanitiser and wash their hands frequently.

NHS Test and Trace

Some businesses are legally required to keep a record of all customers, visitors and staff for 21 days. Some exemptions apply. Check [‘Maintaining records of staff, customers and visitors to support NHS Test and Trace’](#) for details.

Provide adequate ventilation

Where possible, businesses should supply fresh air to enclosed spaces. [Get advice on air conditioning and ventilation from the Health and Safety Executive \(HSE\)](#).

Legionella

If your building has been unoccupied for a period during any lockdowns, [consider legionella risk and HSE advice.](#)



Workplace testing

Register for free rapid lateral flow tests to test your employees twice a week in the workplace.



Regular, rapid testing will be a crucial tool to prevent outbreaks in the workplace as we cautiously ease restrictions, keeping employees safe and businesses open.

Pavement licensing

Businesses who would benefit from having outdoor 'furniture', such as a stall or tables and chairs, or would like to extend an area of outside space that you already have a street trading licence for, can apply for a pavement licence.

A pavement licence costs £100 and will last until 30 September 2021. Getting a licence depends on certain factors, for example available pavement space. Find out more and apply on our website.



Business support

Get weekly updates on the latest support available to businesses by signing up to our business newsletter.

London business hub

Visit London Business Hub for free resources and information to help your business find the right support to help your business restart, sustain and grow.

Personal protective equipment (PPE)

The Value Croydon website has information about recommended PPE for use and where to buy it.

Fire risk assessment

If your business is re-opening or adapting you need to review your fire risk assessment. The London Fire Brigade have produced Covid-19 fire risk guidance to support businesses with this legal requirement.

Looking after mental health and wellbeing

The government has published guidance on the mental health and wellbeing aspects of coronavirus (COVID-19).